

VIVEKANANDA COLLEGE

College with Potential for Excellence

Residential & Autonomous – A Gurukula Institute of Life Training,
Re-accredited (3rd Cycle) with 'A' Grade (3.59 out of 4.00) by NAAC

DBT Star College Scheme Funded

Affiliated to Madurai Kamaraj University

(Managed by Sri Ramakrishna Tapovanam, Tirupparaiturai, Trichy)

TIRUVEDAKAM WEST, MADURAI DISTRICT, TAMIL NADU – 625 234.

DEPARTMENT OF BOTANY

VIRTUAL HERBARIUM



Compiled By

Dr.V.RAMESH

Assistant Professor & Head, Department of Botany

S.NO	FAMILY NAME	BINOMIAL NAME	DATE OF COLLECTION
1.	Acanthaceae	<i>Justicea simplex</i>	26.01.1973
2.		<i>Thunbergia sp.</i>	24.08.1971
3.		<i>Peristrophe sp.</i>	12.08.1972
4.		<i>Peristrophe bicaliculata</i>	25.02.1972
5.		<i>Justicea simplex</i>	19.10.1972
6.		<i>Justicea gendarussa</i>	10.01.1973
7.		<i>Justicea sp.</i>	26.01.1973
8.		<i>Barleria sp.</i>	28.11.1971
9.		<i>Justicea sp.</i>	20.11.1972
10.		<i>Crossandra sp.</i>	15.10.1972
11.		<i>Strobilanthes kunthianus</i>	08.09.1970
12.		<i>Thunbergia sp.</i>	07.08.1971
13.		<i>Peristrophe bicaliculata</i>	02.03.1973
14.		<i>Justicia glauca</i>	07.10.1970
15.		<i>Blepharis boerhaviaefolia</i>	04.02.1973
16.		<i>Strobilanthes kunthianus</i>	23.01.1973
17.		<i>Libonia floribunda</i>	22.10.1975
18.		<i>Justicia simplex</i>	20.10.1975
19.		<i>Strobilanthes sp.</i>	20.10.1975
20.		<i>Strobilanthes sp.</i>	20.10.1975
21.	Amarantaceae	<i>Aerva launata</i>	08.07.1967
22.		<i>Aerva launata</i>	10.02.1973
23.		<i>Achyranthes sp.</i>	20.10.1972
24.		<i>Celosia sp.</i>	15.11.1973
25.		<i>Gomphrena decumbens</i>	01.07.1967
26.		<i>Aerva sp.</i>	10.10.1972
27.		<i>Aerva launata</i>	10.02.1974
28.		<i>Aerva sp.</i>	11.02.1972
29.		<i>Gomphrena decumbens</i>	15.11.1973
30.		<i>Pupalia sp.</i>	18.02.1973
31.		<i>Celosia polugonoides</i>	24.02.1972
32.		<i>Pupallia lappacea</i>	18.02.1973
33.		<i>Achyranthes aspera</i>	01.08.1972
34.		<i>Achyranthes aspera</i>	15.09.1973
35.		<i>Achyranthes bidentata</i>	18.02.1973
36.	Annonaceae	<i>Miliusa eriocarpa</i>	24.09.1973
37.		<i>Miliusa eriocarpa</i>	24.09.1973
38.		<i>Miliusa eriocarpa</i>	24.09.1973
39.		<i>Mitreophora heyneana</i>	24.09.1973

40.		<i>Mitreophora heyneana</i>	24.09.1973
41.		<i>Artabotrys odoratissimus</i>	24.09.1973
42.		<i>Artabotrys odoratissimus</i>	08.01.1972
43.		<i>Artabotrys odoratissimus</i>	08.01.1972
44.	Apocyanaceae	<i>Vinca variegata</i>	22.10.1975
45.		<i>Carissa caramdas</i>	18.02.1973
46.		<i>Carissa caramdas</i>	18.02.1973
47.		<i>Nerium odorum</i>	06.11.1973
48.		<i>Ichnocarpus frutescens</i>	24.08.1973
49.		<i>Ichnocarpus frutescens</i>	24.08.1973
50.		<i>Ichnocarpus frutescens</i>	19.09.1973
51.		<i>Vallaris solanacea</i>	12.02.1973
52.		<i>Aganosma</i>	24.08.1973
53.		<i>Vinca rosea</i>	15.11.1973
54.		<i>Thevetia nerifolia</i>	10.10.1973
55.		<i>Ervatomea cornea</i>	01.01.1973
56.		<i>Nerium odorum</i>	15.11.1973
57.		<i>Vinca major</i>	26.01.1973
58.		<i>Vallaris sp.</i>	25.03.1973
59.		<i>Ervatomea cornea</i>	15.02.1973
60.		<i>Ervatomea sp.</i>	01.01.1973
61.		<i>Vinca major</i>	08.08.1973
62.		<i>Nerium odorum</i>	13.03.1973
63.	Asclepiadaceae	<i>Hemidesmus indicus</i>	18.02.1973
64.		<i>Secamone emitica</i>	24.08.1971
65.		<i>Calotropis gigantea</i>	15.11.1973
66.	Balsaminaceae	<i>Impatiens bookebiana</i>	21.10.1975
67.		<i>Impatiens modesta</i>	22.10.1975
68.		<i>Impatiens sp.</i>	20.10.1973
69.		<i>Impatiens balsamina</i>	05.12.1973
70.		<i>Impatiens leschenaultii</i>	19.10.1973
71.		<i>Impatiens leschenaultii</i>	19.10.1973
72.		<i>Impatiens chinensis</i>	10.01.1973
73.		<i>Impatiens poenicsa</i>	20.11.1973
74.	Bignoniaceae	<i>Millingtonia hortensis</i>	15.11.1973
75.	Boraginaceae	<i>Heliotropium indicum</i>	15.08.1973
76.	Caesalpiniaceae	<i>Parkinsonia aculeata</i>	08.02.1972
77.		<i>Cassia sophera</i>	15.01.1974
78.	Compositae	<i>Anaphalis oblonga</i>	21.10.1975
79.		<i>Picris hieracioides</i>	21.10.1975
80.		<i>Cosmos sp.</i>	23.10.1975

81.		<i>Taraxacum</i>	21.10.1975
82.		<i>Blumea sp.</i>	21.10.1975
83.		<i>Parthenium sp.</i>	08.09.1976
84.		<i>Solidago Canadensis</i>	28.09.1973
85.		<i>Vernonia sp.</i>	13.02.1973
86.		<i>Tridax procumbens</i>	15.02.1973
87.		<i>Anapalis wightiana</i>	22.10.1969
88.		<i>Artemisia parvifolia</i>	19.10.1973
89.		<i>Anaphalis lawii</i>	27.11.1987
90.		<i>Helianthus annuus</i>	15.02.1973
91.		<i>Artemisia parvifolia</i>	19.10.1973
92.		<i>Chrysanthemum sp.</i>	07.10.1973
93.		<i>Salidago sp.</i>	15.11.1973
94.		<i>Artemisia vulgaris</i>	21.10.1973
95.		<i>Anaphalis lawii</i>	12.11.1973
96.		<i>Artemisia parvifolia</i>	19.10.1973
97.		<i>Anaphalis lawii</i>	08.08.1973
98.		<i>Anaphalis lawii</i>	12.11.1973
99.		<i>Achellia sp.</i>	08.08.1971
100.		<i>Anaphalis lawii</i>	07.10.1973
101.		<i>Helichrysum whitii</i>	22.10.1969
102.		<i>Helichrysum</i>	27.11.1973
103.		<i>Ageratum coryzoides</i>	27.10.1971
104.		<i>Artemisia parvifolia</i>	26.10.1973
105.		<i>Anaphalis sp.</i>	27.11.1973
106.	Convolvulaceae	<i>Porana volubilis</i>	04.10.1972
107.		<i>Ipomea cornea</i>	16.04.1972
108.		<i>Jacmania caerulea</i>	05.08.1967
109.		<i>Quamoclit pinnata</i>	07.11.1972
110.		<i>Argyreia hirsute</i>	05.02.1970
111.	Curciferae	<i>Raphanus sativum</i>	10.01.1974
112.		<i>Capsella burspastoris</i>	22.10.1975
113.		<i>Mathiola sp.</i>	07.08.1973
114.		<i>Brassica juncea</i>	10.01.1973
115.		<i>Alyssum canescens</i>	10.01.1973
116.		<i>Hardaune hirsute</i>	22.11.1975
117.		<i>Brassica juncea</i>	19.10.1973
118.	Cucurbitaceae	<i>Melothria sp.</i>	
119.		<i>Trichosanthes anguina</i>	20.12.1972
120.		<i>Coccinia sp.</i>	07.11.1972
121.		<i>Cucumis pubescens</i>	20.12.1972

122.		<i>Mimordica charantia</i>	15.11.1973
123.	Euphorbiaceae	<i>Acalypha sp.</i>	05.11.1972
124.		<i>Acalypha hispida</i>	15.03.1973
125.		<i>Acalypha sp.</i>	06.11.1972
126.		<i>Euphorbia rothiana</i>	08.08.1971
127.		<i>Manihot utilissima</i>	01.03.1972
128.		<i>Mallotus philippinensis</i>	15.09.1968
129.		<i>Macaranga indica</i>	29.10.1967
130.		<i>Euphorbia pulcherrima</i>	15.03.1973
131.		<i>Acalypha wilkensisiana</i>	15.11.1973
132.		<i>Euphorbia rothiana</i>	06.08.1971
133.		<i>Acalypha indica</i>	25.03.1973
134.		<i>Jatropha rosea</i>	30.12.1972
135.		<i>Tragia involucrata</i>	02.03.1973
136.		<i>Acalypha fruticens</i>	16.09.1969
137.		<i>Ricinus communis</i>	15.11.1973
138.		<i>Euphorbia rothiana</i>	28.10.1967
139.		<i>Acalypha sp.</i>	20.03.1973
140.		<i>Euphorbia splendens</i>	19.10.1972
141.		<i>Manihot utilissima</i>	01.03.1972
142.		<i>Chrozophora tinctoria</i>	14.02.1973
143.	<i>Mallotus philippinensis</i>	16.09.1968	
144.	<i>Sarcococca trinerva</i>	27.11.1971	
145.	<i>Euphorbia splendens</i>	19.10.1972	
146.	<i>Chrozophora tinctoria</i>	15.04.1972	
147.	Geraniaceae	<i>Geranium sp.</i>	27.11.1973
148.		<i>Geranium sp.</i>	19.10.1973
149.		<i>Geranium sp.</i>	20.10.1973
150.		<i>Geranium sp.</i>	20.10.1973
151.		<i>Geranium sp.</i>	21.10.1973
152.		<i>Pelargonium grveolens</i>	21.10.1975
153.		<i>Pelargonium sp.</i>	07.08.1973
154.		<i>Pelargonium sp.</i>	27.11.1973
155.		<i>Hedeia sp.</i>	26.10.1967
156.	Labiatae	<i>Salvia sp.</i>	21.10.1975
157.		<i>Leucas suffruticosa</i>	20.10.1975
158.		<i>Leucas sp.</i>	08.11.1972
159.		<i>Salvia splendens</i>	30.10.1967
160.		<i>Leucas malabarica</i>	12.02.1973
161.		<i>Leucas officinalis</i>	09.02.1972
162.		<i>Salvia coccinia</i>	19.10.1972

163.		<i>Leucas sp.</i>	20.11.1972
164.		<i>Salvia splendens</i>	18.10.1972
165.		<i>Ocimum sp.</i>	15.11.1973
166.		<i>Salvia splendens</i>	19.10.1972
167.		<i>Salvia leucantha</i>	20.10.1976
168.		<i>Plectranthus sp.</i>	08.08.1971
169.		<i>Salvia sp.</i>	20.10.1972
170.		<i>Salvia sp.</i>	19.10.1972
171.		<i>Plectranthus whightii</i>	23.10.1969
172.		<i>Salvia splendens</i>	18.10.1972
173.		<i>Pogostemon wightii</i>	30.10.1967
174.		<i>Ocimum sanctum</i>	09.10.1974
175.		<i>Leucas lamifolia</i>	20.11.1972
176.	Magnoliaceae	<i>Michelia champaca</i>	13.08.1980
177.		<i>Michelia champaca</i>	20.08.1981
178.	Malvaceae	<i>Sida rhombifolia</i>	21.11.1973
179.		<i>Sida vexonicalfolia</i>	17.09.1972
180.		<i>Pavonia zeylanica</i>	-----
181.		<i>Abutilon millery</i>	22.10.1975
182.		<i>Abutilon indicum</i>	06.11.1973
183.		<i>Gossypium herbaceum</i>	06.10.1974
184.		<i>Hibiscus micranthia</i>	04.09.1974
185.		<i>Hibiscus sudarifa</i>	06.10.1974
186.	Meliaceae	<i>Melia azadirachta</i>	27.12.1972
187.		<i>Walsura piscidia</i>	18.02.1973
188.		<i>Walsura piscidia</i>	18.02.1973
189.		<i>Azadirachta indica</i>	20.02.1972
190.		<i>Melia azadirachta</i>	24.03.1972
191.		<i>Azadirachta indica</i>	25.03.1973
192.		<i>Melia Azadirachta</i>	27.12.1972
193.		<i>Walsura piscidia</i>	18.02.1973
194.	Mimosaceae	<i>Acasia dealbata</i>	17.09.1974
195.		<i>Acasia podolyriaefolia</i>	28.10.1967
196.		<i>Mimosa pudica</i>	15.08.1973
197.		<i>Acasia sp.</i>	21.10.1972
198.		<i>Mimosa sp.</i>	19.10.1972
199.		<i>Acacia dealbata</i>	18.10.1972
200.		<i>Acacia dealbata</i>	6.10.1969
201.		<i>Acacia melanoxylon</i>	07.08.1971
202.		<i>Acacia podaliriaefolia</i>	07.08.1971
203.		<i>Acacia podaliriaefolia</i>	7.08.1971

204.		<i>Acacia podaliriaefolia</i>	7.08.1971
205.		<i>Acacia melanoxylon</i>	19.10.1972
206.	Myrtaceae	<i>Callistemon lanceolatus</i>	19.10.1972
207.		<i>Callistemon lanceolatus</i>	21.10.1972
208.		<i>Callistemon cinearis</i>	15.04.1972
209.		<i>Callistemon lanceolatus</i>	21.10.1972
210.		<i>Beckia varicata</i>	07.08.1971
211.		<i>Eucalptus sp.</i>	22.12.1972
212.		<i>Callistemon linearis</i>	26.10.1968
213.		<i>Beckia varicata</i>	07.08.1971
214.		<i>Psidium guajava</i>	12.12.1973
215.		<i>Eucalptus sp.</i>	07.10.1970
216.		<i>Eucalyptus sp.</i>	19.10.1972
217.		<i>Rhodomyrtus tomentosa</i>	07.08.1971
218.		<i>Syncarpia laurifolia</i>	22.10.1975
219.		<i>Feijoa sellowiana</i>	22.10.1975
220.		<i>Baeckea virgata</i>	22.10.1975
221.		<i>Callistemon lanceolatus</i>	22.10.1975
222.		<i>Rhodomyrtus tomentosa</i>	07.08.1971
223.		<i>Rhodomyrtus tomentosa</i>	07.08.1971
224.		<i>Rhodomyrtus tomentosa</i>	07.08.1971
225.		<i>Baeckea virgata</i>	07.08.1971
226.	<i>Eucalyptus sp.</i>	08.08.1971	
227.	<i>Rhodomyrtus tomentosa</i>	07.08.1971	
228.	Nyctaginaceae	<i>Boerhavia diffusa</i>	08.08.1973
229.		<i>Bougainvillea sps.</i>	15.08.1972
230.	Nymphaeaceae	<i>Nelumbium speciosum</i>	15.01.1974
231.		<i>Nymphaea lotus</i>	15.01.1974
232.		<i>Nymphaea stellata</i>	26.08.1973
233.	Oleaceae	<i>Jasminum sp.</i>	01.09.1968
234.	Oxalideae	<i>Oxalis variabilis</i>	21.10.1975
235.		<i>Oxalis sp.</i>	19.10.1973
236.		<i>Oxalis latifolia</i>	20.10.1972
237.		<i>Oxalis pubescens</i>	19.10.1973
238.		<i>Biophytum sensitivum</i>	07.08.1973
239.		<i>Biophytum intermedium</i>	16.09.1973
240.		<i>Biophytum sensitivum</i>	7.12.1973
241.	Papaveraceae	<i>Argemonemexicana</i>	10.10.1972
242.	Papilionaceae	<i>Ulex europaeus</i>	07.08.1971
243.		<i>Trifolium repens</i>	19.10.1972
244.		<i>Crotalaria fysonii</i>	22.07.1967

245.		<i>Ulex europaeus</i>	19.10.1972
246.		<i>Trifolium repens</i>	08.08.1971
247.		<i>Crotalaria scabrella</i>	21.10.1970
248.		<i>Clitoria ternatea</i>	15.01.1974
249.		<i>Clitoria ternatea</i>	12.08.1972
250.		<i>Desmodium scalpe</i>	07.08.1971
251.		<i>Desmodium scalpe</i>	27.11.1971
252.		<i>Pongamia glabra</i>	05.02.1973
253.		<i>Clitoria ternatea</i>	18.11.1967
254.		<i>Clitoria ternatea</i>	2.08.1972
255.		<i>Dolichos lablab</i>	15.11.1973
256.		<i>Parochetus communis</i>	23.10.1975
257.		<i>Tephrosia purpurea</i>	10.10.1973
258.		<i>Crotalaria scadrella</i>	23.10.1969
259.		<i>Ulex europaeus</i>	07.08.1971
260.	Ranunculaceae	<i>Clematis wightiana</i>	15.06.1973
261.		<i>Ranunculus wallichianus</i>	07.10.1973
262.		<i>Thalictrum javanicum</i>	07.10.1973
263.		<i>Delphinium ajacis</i>	06.06.1973
264.		<i>Delphinium atacis</i>	22.10.1975
265.		<i>Rannanculus wallichianus</i>	07.10.1973
266.	Rosaceae	<i>Rubus moluccanus</i>	20.10.1973
267.		<i>Rubus moluccanus</i>	09.02.1974
268.		<i>Rubus moluccanus</i>	15.09.1973
269.		<i>Rubus moluccanus</i>	20.10.1973
270.		<i>Spiraea corymbosa</i>	27.11.1973
271.		<i>Spiraea corymbosa</i>	27.11.1973
272.		<i>Rosa sp.</i>	12.03.1973
273.		<i>Rosa indica</i>	20.10.1973
274.		<i>Photonia notoniana</i>	22.10.1973
275.		<i>Prinsepia zillilis</i>	22.10.1969
276.		<i>Rubus racemosus</i>	23.10.1973
277.		<i>Rubus racemosus</i>	19.10.1973
278.		<i>Rubus racemosus</i>	19.10.1973
279.		<i>Rubus racemosus</i>	19.10.1973
280.		<i>Rubus racemosus</i>	19.10.1973
281.		<i>Potentilla leschenatiana</i>	22.10.1975
282.		<i>Prinsepia utilis</i>	21.10.1975
283.		<i>Fragaria sp.</i>	08.08.1973
284.		<i>Fragaria sp.</i>	07.08.1973
285.		<i>Prunus sp.</i>	19.10.1973

286.		<i>Prunus sp.</i>	19.10.1973
287.		<i>Rubus fruticosus</i>	09.02.1973
288.		<i>Rubus malus</i>	08.08.1973
289.		<i>Rubus racemosus</i>	20.10.1973
290.		<i>Rubus racemosus</i>	07.08.1973
291.		<i>Rubus racemosus</i>	21.10.1973
292.		<i>Rubus moluccanus</i>	20.10.1973
293.		<i>Rubus moluccanus</i>	09.02.1974
294.		<i>Rubus moluccanus</i>	15.09.1973
295.		<i>Mussaenda sp.</i>	13.08.1980
296.		<i>Mussaenda sp.</i>	13.08.1980
297.		<i>Mussaenda tomentosa</i>	13.08.1980
298.		<i>Mussaenda tomentosa</i>	13.08.1980
299.		<i>Mussaenda glabrate</i>	09.02.1972
300.		<i>Psychotria curviflora</i>	23.10.1969
301.		<i>Mussaenda tomentosa</i>	23.01.1973
302.		<i>Ophiorhiza mungos</i>	19.10.1973
303.		<i>Knoxia sp.</i>	06.08.1973
304.		<i>Knoxia sp.</i>	20.10.1973
305.		<i>Knoxia hedyotis</i>	07.08.1973
306.		<i>Knoxia sp.</i>	8.11.1973
307.		<i>Knoxia sp.</i>	4.10.1974
308.		<i>Knoxia mathis</i>	18.10.1973
309.		<i>Ophiorhiza mungos</i>	4.09.1974
310.	Rubiaceae	<i>Mussaendra frondosa</i>	28.10.1973
311.		<i>Canthium sp.</i>	28.10.1973
312.		<i>Ixora sp.</i>	15.02.1973
313.		<i>Annotis monosperma</i>	19.10.1973
314.		<i>Annotis monosperma</i>	19.10.1973
315.		<i>Knoxia sp.</i>	07.08.1973
316.		<i>Hedjotis swertiodes</i>	23.10.1973
317.		<i>Oldenlandia sp.</i>	23.01.1973
318.		<i>Oldenlandia zimbellata</i>	09.02.1973
319.		<i>Vitex negundo</i>	18.10.1973
320.		<i>Annotis monosperma</i>	18.10.1973
321.		<i>Hamelia patens</i>	15.03.1973
322.		<i>Galiuma sperifolium</i>	26.10.1967
323.		<i>Plectronia sp.</i>	24.08.1973
324.		<i>Rubia cordifolia</i>	27.11.1971
325.		<i>Oldenlandia zimbellata</i>	07.10.1973
326.		<i>Vinurnum sp.</i>	16.10.1973

327.		<i>Galium asperifolium</i>	07.08.1971
328.		<i>Luculia gratissima</i>	22.10.1975
329.		<i>Rubia cordifolia</i>	23.10.1975
330.		<i>Anotis leschenaultiana</i>	22.10.1975
331.		<i>Cinchona sp.</i>	23.10.1975
332.		<i>Galium asperifolium</i>	08.08.1971
333.		<i>Mussaenda sp.</i>	13.08.1980
334.	Rutaceae	<i>Toddalia asiatica</i>	24.09.1973
335.		<i>Toddalia asiatica</i>	15.09.1968
336.		<i>Ruta graveolens</i>	27.11.1973
337.		<i>Ruta graveolens</i>	27.11.1973
338.		<i>Ruta graveolens</i>	27.11.1973
339.		<i>Murraya exolica</i>	04.11.1973
340.		<i>Citrus sp.</i>	20.03.1973
341.		<i>Feronia elephantum</i>	05.03.1973
342.		<i>Murraya koenigii</i>	15.11.1973
343.		<i>Feronia elephantum</i>	04.03.1973
344.		<i>Atalantia monophylla</i>	18.02.1973
345.		<i>Toddalia asiatica</i>	07.08.1973
346.		Sapotaceae	<i>Achras sapota</i>
347.	Scrophulariaceae	<i>Calceolaria mexicana</i>	27.11.1971
348.		<i>Anthriscinum majus</i>	01.04.1967
349.		<i>Digitalis purpurea</i>	07.08.1971
350.		<i>Striga lutea</i>	27.11.1967
351.		<i>Calceolaria mexicana</i>	23.10.1969
352.		<i>Striga lutea</i>	07.08.1971
353.		<i>Striga lutea</i>	07.08.1971
354.		<i>Digitalis purpurea</i>	09.08.1971
355.		<i>Digitalis purpurea</i>	07.08.1971
356.		<i>Scoparia dulce</i>	11.02.1973
357.		<i>Calceolaria mexicana</i>	28.11.1971
358.		<i>Scoparia dulce</i>	25.08.1969
359.		<i>Digitalis purpurea</i>	8.08.1971
360.		<i>Striga lutea</i>	20.12.1972
361.		<i>Striga lutea</i>	05.11.1972
362.		<i>Scrophularina Americana</i>	21.10.1975
363.		<i>Pedicularis zeylanica</i>	21.10.1975
364.		<i>Pedicularis zeylanica</i>	20.01.1975
365.		<i>Penstemon companulatus</i>	22.10.1975
366.		<i>Russellia sp.</i>	12.08.1972
367.	<i>Calceolaria Mexicana</i>	10.01.1973	

368.	Solanaceae	<i>Solanum jasminoides</i>	19.10.1973	
369.		<i>Solanum lycopersicum</i>	15.10.1973	
370.		<i>Solanum lycopersicum</i>	15.10.1973	
371.		<i>Solanum verbascifolium</i>	20.10.1973	
372.		<i>Solanum ferox</i>	19.10.1973	
373.		<i>Solanum sp.</i>	19.10.1973	
374.		<i>Cestrum elegans</i>	20.10.1973	
375.		<i>Solanum jasminoides</i>	19.10.1973	
376.		<i>Cestrum elegans</i>	23.01.1973	
377.		<i>Physalis minima</i>	04.11.1973	
378.		<i>Cestrum elegans</i>	09.02.1973	
379.		<i>Solanum jasminoides</i>	09.02.1973	
380.		<i>Solanum sisymbrafolium</i>	21.10.1973	
381.		<i>Solanum surattense</i>	20.10.1973	
382.		<i>Solanum pseudocapsium</i>	20.10.1973	
383.		<i>Solanum verbascifolium</i>	20.10.1973	
384.		<i>Solanum sisymbrafolium</i>	19.10.1973	
385.		<i>Cestrum sp.</i>	23.01.1973	
386.		<i>Solanum sp.</i>	28.11.1973	
387.		<i>Capsicum frutescens</i>	15.11.1973	
388.		<i>Physalis minima</i>	04.04.1974	
389.		<i>Solanum toruam</i>	04.01.1973	
390.		<i>Cestrum nocturnum</i>	01.01.1973	
391.		<i>Solanum wightii</i>	26.10.1967	
392.		<i>Streptosolan jamesonii</i>	22.10.1975	
393.		<i>Cestrum aurantiacum</i>	22.10.1975	
394.		<i>Solanum sp.</i>	20.10.1975	
395.		<i>Schizanthus pinnatus</i>	22.10.1975	
396.		<i>Cestrum elagans</i>	08.08.1974	
397.		<i>Solanum jasminoides</i>	19.10.1973	
398.		Sterculiaceae	<i>Kleinhovia hospita</i>	30.11.1973
399.			<i>Dombeya sp.</i>	20.02.1973
400.			<i>Sterculia foetida</i>	03.03.1973
401.			<i>Kleinhovia hospita</i>	08.01.1973
402.			<i>Kleinhovia hospita</i>	08.01.1973
403.			<i>Dombeya spectabilis</i>	21.10.1975
404.			<i>Dombeya spectabilis</i>	22.10.1975
405.			<i>Dombeya phoemiceae</i>	04.10.1973
406.			<i>Sterculia foetida</i>	03.03.1973
407.	<i>Sterculia foetida</i>		03.03.1973	
408.	<i>Guazuma tomentosa</i>		25.03.1973	

409.	Tiliaceae	<i>Triumfetta bartranmia</i>	16.12.1973	
410.		<i>Grewia gorientalis</i>	05.08.1967	
411.	Tropaeolaceae	<i>Tropaeolum major</i>	15.09.1973	
412.	Umbrlliferae	<i>Centella asiatica</i>	20.08.1981	
413.		<i>Centella asiatica</i>	05.01.1972	
414.		<i>Pimpinella anisum</i>	19.10.1972	
415.		<i>Heracleum pedatum</i>	21.10.1975	
416.		<i>Pimpinella candolleana</i>	21.10.1975	
417.		<i>Centella asiatica</i>	21.10.1975	
418.		<i>Bupleurum sp.</i>	21.10.1975	
419.		<i>Heracleum pedatum</i>	27.11.1971	
420.		<i>Pimpinella sp.</i>	19.03.1972	
421.		<i>Coriandrum sativum</i>	03.09.1972	
422.		Urticaceae	<i>Elatostema sessile</i>	21.10.1975
423.			<i>Pilea trineryeae</i>	22.10.1975
424.			<i>Trema orientalis</i>	21.10.1975
425.	Verbenaceae	<i>Verbena sp.</i>	27.11.1971	
426.		<i>Lippia nudiflora</i>	24.08.1971	
427.		<i>Lippia nudiflora</i>	20.12.1972	
428.		<i>Lantana indica</i>	09.02.1972	
429.		<i>Gmelina asiatica</i>	30.01.1973	
430.		<i>Clerodendron infortunatum</i>	15.09.1971	
431.		<i>Clerodendron sp.</i>	01.08.1972	
432.		<i>Citharexylum cinereum</i>	07.02.1973	
433.		<i>Tectona grandis</i>	10.02.1974	
434.		<i>Duranta plumieri</i>	24.10.1975	
435.		<i>Duranta plumieri</i>	23.10.1973	
436.		<i>Verbena venosa</i>	20.10.1975	
437.		<i>Clerodenron infortunaium</i>	16.09.1978	
438.		<i>Lippia nudiflora</i>	10.01.1974	
439.		<i>Vitex negundo</i>	18.09.1968	
440.		<i>Lantana indica</i>	19.10.1972	
441.		<i>Vitex negundo</i>	19.10.1972	
442.		<i>Verbana venosa</i>	18.10.1972	
443.		Violaceae	<i>Viola sp.</i>	17.02.1973



Herbarium

DEPARTMENT OF BOTANY
VIVEKANANDA COLLEGE
TIRUVEDAKAM WEST., MADURAI DISTRICT
SOUTH INDIA.

Tag No. _____

Genus JUSTICEA

Species SIMPLEX

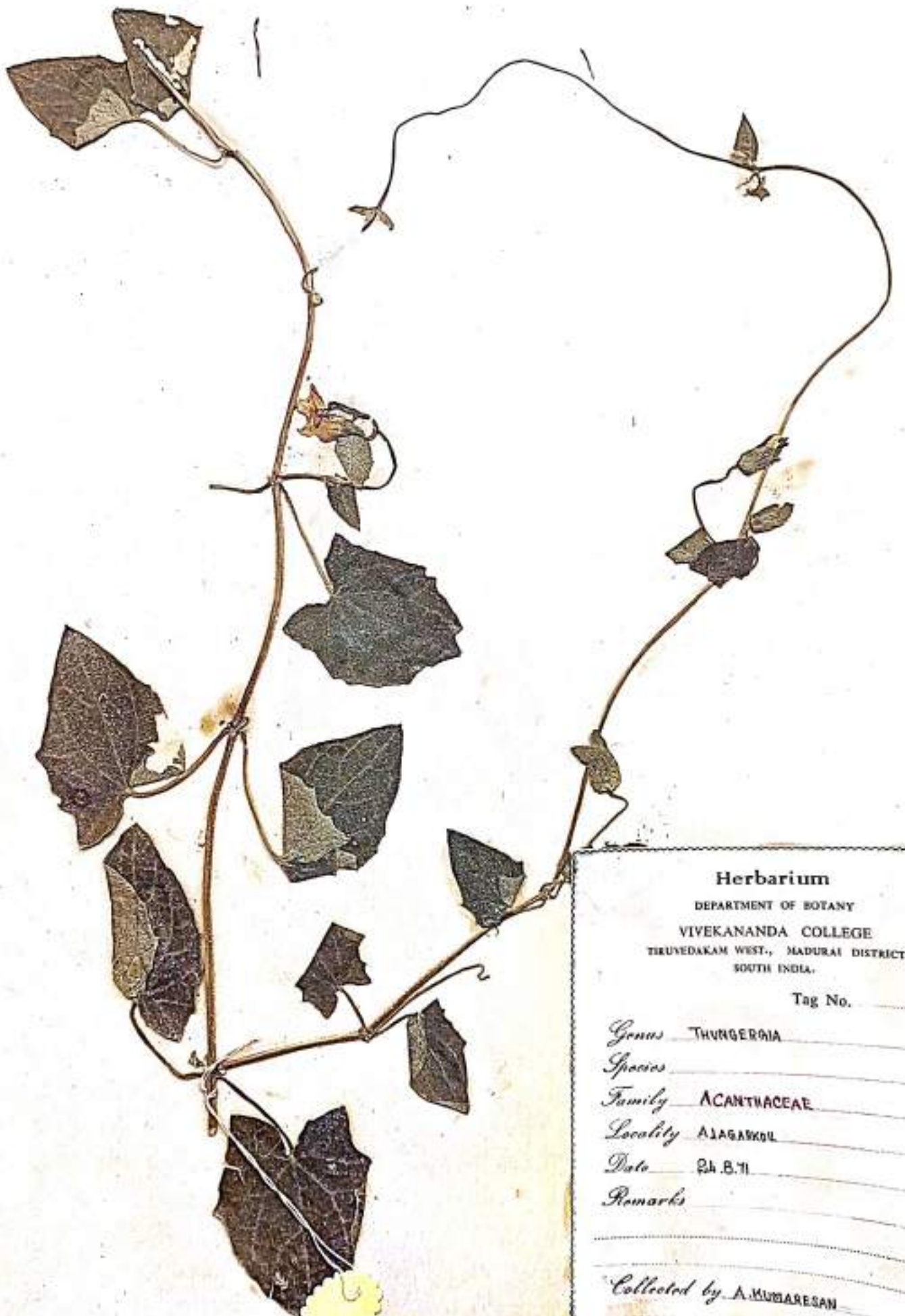
Family ACANTHACEAE

Locality KODAIKANAL

Date 26.1.73

Remarks _____

Collected by A. KUMARASAN



Herbarium

DEPARTMENT OF BOTANY
VIVEKANANDA COLLEGE
THRUVEDAKAM WEST., MADURAI DISTRICT
SOUTH INDIA.

Tag No. _____

Genus THUNBERGIA

Species _____

Family ACANTHACEAE

Locality AJAGARKOL

Date 24.8.71

Remarks _____

Collected by A. KUMARASAN



Herbarium

DEPARTMENT OF BOTANY
VIVEKANANDA COLLEGE
TIKUVEDAKAM WEST., MADURAI DISTRICT
SOUTH INDIA.

Tag No. _____

Genus PERISTROPHE.

Species _____

Family ACANTHACEAE

Locality COLLEGE CAMPUS

Date 12.8.72.

Remarks _____

Collected by A. MURUGESAN.



Herbarium

DEPARTMENT OF BOTANY
VIVEKANANDA COLLEGE
THIRUVEDAKAM WEST, MADURAI DISTRICT
SOUTH INDIA.

Tag No. _____

Genus PERISTROPHE

Species BICALCULATA

Family ACANTHACEAE

Locality AMERICAN COLLEGE CAMPUS.

Date 25.2.12.

Remarks _____

Collected by A. MURUGESAN



Herbarium

DEPARTMENT OF BOTANY
VIVEKANANDA COLLEGE
TIRUVEDAKAM WEST., MADURAI DISTRICT
SOUTH INDIA.

Tag No. _____

Genus JUSTICIA _____

Species SIMPLEX _____

Family ACANTHACEAE _____

Locality Ooty _____

Date 19.10.72 _____

Remarks _____

Collected by A. KUMARARAM _____



Herbarium

DEPARTMENT OF BOTANY
VIVEKANANDA COLLEGE
TIRUVEDAKAM WEST, MADURAI DISTRICT
SOUTH INDIA.

Tag No. _____

Genus JUSTICEA

Species GENDARUSSA

Family ACANTHACEAE

Locality MODAIKANAL

Date 10.1.73

Remarks

Collected by A. MURDARESAN



Herbarium

DEPARTMENT OF BOTANY
VIVEKANANDA COLLEGE
THRUVEDAKAM WEST., MADURAI DISTRICT
SOUTH INDIA.

Tag No. _____

Genus JUSTICIA SPS. _____

Species _____

Family ACANTHACEAE _____

Locality KODAIKANAL _____

Date 26.1.73. _____

Remarks _____

Collected by A. MUMBAREGAN _____



Herbarium
DEPARTMENT OF BOTANY
VIVEKANANDA COLLEGE
TIKUVEDAKAM WEST, MADURAI DISTRICT
SOUTH INDIA.

Tag No. _____

Genus BARLERIA SPS.

Species _____

Family ACATHACEAE

Locality SURULI

Date 28.11.71

Remarks _____

Collected by A. KUMARESAN



Herbarium
DEPARTMENT OF BOTANY
VIVEKANANDA COLLEGE
TIRUVEDAKAM WEST., MADURAI DISTRICT
SOUTH INDIA.

Tag No. _____

Genus JUSTICIA _____
Species _____
Family ACANTHACEAE _____
Locality ANAIMALAI HILLS _____
Date 20.11.78 _____
Remarks _____

Collected by A. MURUGESAN



Herbarium

DEPARTMENT OF BOTANY
VIVEKANANDA COLLEGE
THIRUVEDAKAM WEST., MADURAI DISTRICT
SOUTH INDIA.

Tag No. _____

Genus CROSSANDRA .SP.

Species _____

Family ACANTHACEAE

Locality THIRUVEDAKAM

Date 15.12.72

Remarks GREEN FLOWERS

Collected by A. KUMARASAN



Herbarium

DEPARTMENT OF BOTANY
VIVEKANANDA COLLEGE
TIRUVEDAKAM WEST., MADURAI DISTRICT
SOUTH INDIA.

Tag No. _____

Genus STROBILANTHES _____

Species KUNTHIANUS _____

Family ACANTHACEAE _____

Locality HODAIKANAL _____

Date 8.9.70 _____

Remarks _____

Collected by A. MURUGESAN.



Herbarium
DEPARTMENT OF BOTANY
VIVEKANANDA COLLEGE
TIRUYEDAKAM WEST., MADURAI DISTRICT
SOUTH INDIA.

Tag No. _____

Genus THUNDERBIA _____ SPEC.

Species _____

Family ACANTHACEAE

Locality MADAIKMANAL

Date 1.8.71

Remarks TWIST.

Collected by A. KUMARASAN



Herbarium

DEPARTMENT OF BOTANY
VIVEKANANDA COLLEGE
THIRUVEDAKAM WEST., MADURAI DISTRICT
SOUTH INDIA.

Tag No.

Genus PERISTROPHE

Species BICALICULATA

Family ACANTHACEAE

Locality RAJAJI PARK

Date 2.3.73

Remarks

Collected by A. YUMARSAN



Herbarium

DEPARTMENT OF BOTANY
VIVEKANANDA COLLEGE
TIRUVEDAKAM WEST, MADURAI DISTRICT
SOUTH INDIA.

Tag No. _____

Genus JUSTICA

Species GLAUCA

Family ACANTHACEAE

Locality MENJOLAI

Date 7.10.70

Remarks Stub.

Collected by A. H. MURUGAN



Herbarium

DEPARTMENT OF BOTANY

VIVEKANANDA COLLEGE

TIRUVEDAKAM WEST, MADURAI DISTRICT
SOUTH INDIA.

Tag No. _____

Genus BOERHAVIA

Species BOERHAVIAFOETA

Family ACANTHACEAE

Locality ALABARKOIL

Date 1.2.73

Remarks _____

Collected by AKUMARISAN



Herbarium

DEPARTMENT OF BOTANY
VIVEKANANDA COLLEGE
TIRUVEDAKAM WEST., MADURAI DISTRICT
SOUTH INDIA.

Tag No. _____

Genus STROGILANTHUS

Species MUNTHIANUS (குறிஞ்சிமரணி)

Family ACANTHACEAE

Locality MEDAIKANAL

Date 23.1.73

Remarks _____

Collected by A. MUMABEDAN



Herbarium,

DEPARTMENT OF BOTANY

VIVEKANANDA COLLEGE

TIRUVEDAKAM WEST., MADURAI DISTRICT
SOUTH INDIA.

Tag No.

Genus LIBONIA

Species FLORIBUNDA

Family ACANTHACEAE

Locality COONCOOR

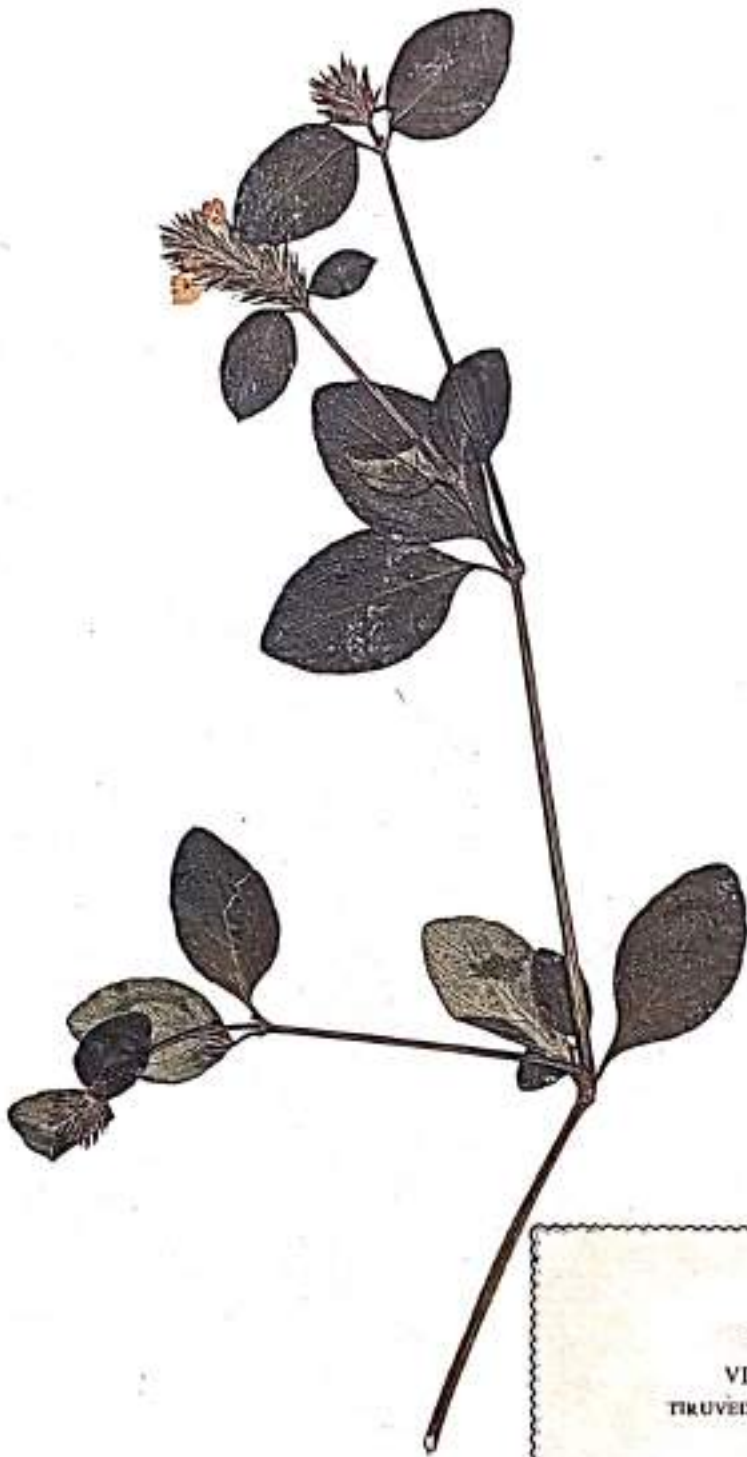
Date 22.10.75

Remarks

Collected by A. MUMTHASAN

BOTANY MUSEUM

VIVEKANANDA COLLEGE, TIRUVEDAKAM WEST,
MADURAI DT.



Herbarium

DEPARTMENT OF BOTANY

VIVEKANANDA COLLEGE

TIRUVEDAKAM WEST., MADURAI DISTRICT
SOUTH INDIA.

Tag No. _____

Genus JUSTICIA _____

Species SIMPLEX _____

Family ACANTHACEAE _____

Locality DHODABETTA _____

Date 20.10.75 _____

Remarks _____

Collected by A. HEMARESAN _____

BOTANY MUSEUM
VIVEKANANDA COLLEGE, TIRUVEDAKAM WEST,
MADURAI DT.



Herbarium

DEPARTMENT OF BOTANY

VIVEKANANDA COLLEGE

TIRUVEDAKAM WEST., MADURAI DISTRICT
SOUTH INDIA.

Tag No. _____

Genus STROBILOANTHES .SP.

Species _____

Family ACANTHACEAE

Locality DHODADETTA

Date 24.10.75

Remarks _____

Collected by A. KUMARESAN



Herbarium

DEPARTMENT OF BOTANY
VIVEKANANDA COLLEGE
TIRUVEDAKAM WEST., MADURAI DISTRICT
SOUTH INDIA.

Tag No. _____

Genus *STROGILANTHES* . sp.

Species _____

Family (*DHODABETTA*) - ACANTHACEAE

Locality *DHODABETTA*

Date *20.10.75*

Remarks _____

Collected by *A. MUMTIAH SAN*



Herbarium
DEPARTMENT OF BOTANY
VIVEKANANDA COLLEGE
TIRUVEDAKAM WEST., MADURAI DISTRICT
SOUTH INDIA.

Tag No. _____

Genus CELOSIA _____
Species CRISTATA _____
Family AMARANTACEAE _____
Locality MADURAI _____
Date 18.1.73 _____
Remarks _____

Collected by A. KUMAREGAN



NAME.....
FAMILY.....
LOCALITY.....
DATE OF C.....
COLLECTED.....
REMARKS.....

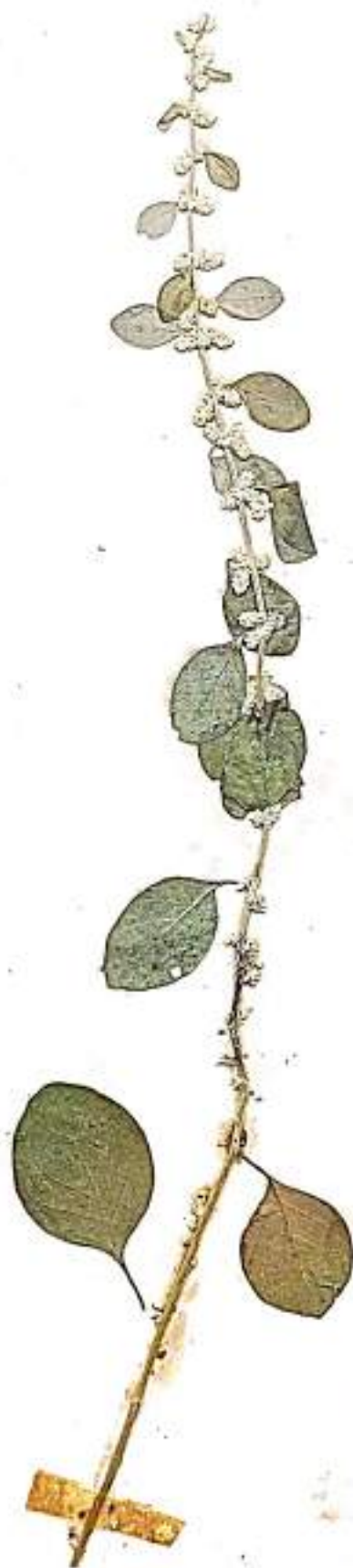
Herbarium
DEPARTMENT OF BOTANY
VIVEKANANDA COLLEGE
THIRUVEDAKAM WEST., MADURAI DISTRICT
SOUTH INDIA.

Tag No. _____

Genus AERVA _____
Species LAUNATA _____
Family AMARANTACEAE _____
Locality SHOLAVANDAN _____
Date 8-7-67 _____

Remarks _____

Collected by JEYACHANDRAN



Herbarium

DEPARTMENT OF BOTANY
VIVEKANANDA COLLEGE
TIRUVEDAKAM WEST., MADURAI DISTRICT
SOUTH INDIA.

Tag No. _____

Genus AERVA _____

Species LAUNATA _____

Family AMARANTACEAE. _____

Locality COLLEGE CAMPUS _____

Date 10.1.73 _____

Remarks _____

Collected by A. KUMARASAN _____



Herbarium
DEPARTMENT OF BOTANY
VIVEKANANDA COLLEGE
TIRUVEDAKAM WEST, MADURAI DISTRICT
SOUTH INDIA.

Tag No. _____

Genus ACHYRANTHES . SPEC. _____

Species _____

Family AMARANTACEAE

Locality Ooty

Date 20.10.72

Remarks _____

Collected by A. YAMMARESAN



Herbarium

DEPARTMENT OF BOTANY
VIVEKANANDA COLLEGE
TIRUVEDAKAM WEST., MADURAI DISTRICT
SOUTH INDIA.

Tag No. _____

Genus *CELOSIA* .Sps. _____

Species _____

Family *AMARANTACEAE* _____

Locality *COLLEGE CAMPUS.* _____

Date *15.11.73.* _____

Remarks _____

Collected by *A. MUMARESAN*



Herbarium

DEPARTMENT OF BOTANY
VIVEKANANDA COLLEGE
THIRUVEDAKAM WEST, MADURAI DISTRICT
SOUTH INDIA.

Tag No. _____

Genus *GOMPHRENA* DECUMANS.

Species _____

Family AMARANTACEAE

Locality TAMBARAM

Date 1.7.67

Remarks _____

NAME.....

FAMILY.....

LOCALITY..... Ja

DATE OF COLL.....

COLLECTED BY.....

REMARKS.....

Collected by A. KUMARAN



Aerva
Amaranthaceae

Herbarium

DEPARTMENT OF BOTANY
VIVEKANANDA COLLEGE
THRUVEDAKAM WEST., MADURAI DISTRICT
SOUTH INDIA.

Tag No. _____

Genus *AERVA* _____

Species _____

Family *AMARANTHACEAE* _____

Locality *VAYAN RIVER (SUGLAVANDAM)* _____

Date *10.10.1972* _____

Remarks _____

Collected by *A. KUMARESAN* _____



Herbarium

DEPARTMENT OF BOTANY
VIVEKANANDA COLLEGE
THRUVEDAKAM WEST., MADURAI DISTRICT
SOUTH INDIA.

Tag No. _____

Genus *AERVA* _____

Species *LAUNATA* _____

Family *AMARANTACEAE* _____

Locality *COLLEGE CAMPUS.* _____

Date *10.2.74* _____

Remarks _____

Collected by *A. KUMARASAMI* _____



Herbarium

DEPARTMENT OF BOTANY
VIVEKANANDA COLLEGE
THIRUVEDAKAM WEST., MADURAI DISTRICT
SOUTH INDIA.

Tag No. _____

Genus *AERVA* Sp. _____

Species _____

Family *AMARANTACEAE* _____

Locality *RAJAJI PARK - MADURAI.* _____

Date *11.2.72* _____

Remarks _____

Collected by *A. KUMARESAN* _____



Herbarium

DEPARTMENT OF BOTANY
VIVEKANANDA COLLEGE
TIRUVEDAKAM WEST, MADURAI DISTRICT
SOUTH INDIA.

Tag No. _____

Genus *GOMPHRENA*

Species *DECUMBENS*

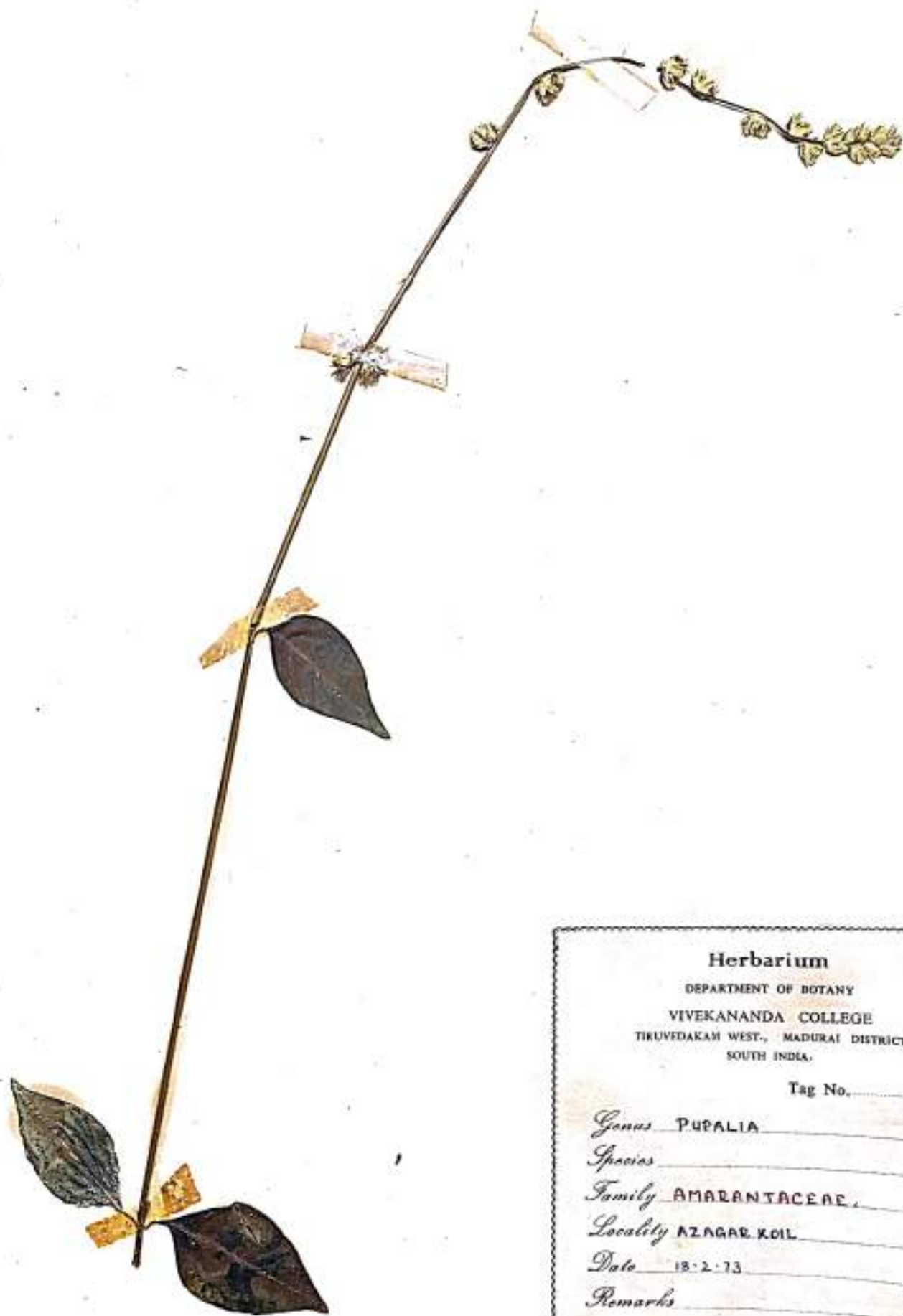
Family *AMARANTACEAE*

Locality *COLLEGE CAMPUS*

Date *15-11-73*

Remarks _____

Collected by *A. KUMARASAN*



Herbarium

DEPARTMENT OF BOTANY
VIVEKANANDA COLLEGE
TIRUVEDAKAM WEST., MADURAI DISTRICT
SOUTH INDIA.

Tag No. _____

Genus PUPALIA

Species _____

Family AMARANTACEAE.

Locality AZAGAR KOIL

Date 18-2-73

Remarks _____

Collected by A. KUMARASAN



Herbarium

DEPARTMENT OF BOTANY
VIVEKANANDA COLLEGE
TIRUVEDAKAM WEST, MADURAI DISTRICT
SOUTH INDIA.

Tag No. _____

Genus CELOSIA

Species POLYGONOIDES

Family AMARANTACEAE

Locality RAJAJEE PARK

Date 24.2.78

Remarks _____

Collected by A. MUMARJAN



Herbarium

DEPARTMENT OF BOTANY
VIVEKANANDA COLLEGE
TIRUVEDAKAM WEST, MADURAI DISTRICT
SOUTH INDIA.

Tag No. _____

Genus PUPALLIA

Species LAPPACEA

Family AMARANTACEAE

Locality ALGARMOUL

Date 18.2.73.

Remarks _____

Collected by A. KUMARASAM



Herbarium

DEPARTMENT OF BOTANY
VIVEKANANDA COLLEGE
THIRUVEDAKAM WEST, MADURAI DISTRICT
SOUTH INDIA.

Tag No. _____

Genus *PUPALIA* _____

Species *LAPPACEA* _____

Family *AMARANTACEAE* _____

Locality *AZAGARKOIL* _____

Date *18.2.'13* _____

Remarks _____

Collected by *A. KUMARASAN* _____



Herbarium

DEPARTMENT OF BOTANY
VIVEKANANDA COLLEGE
THRUVIDAKAM WEST, MADURAI DISTRICT
SOUTH INDIA.

Tag No. _____

Genus *ACHYRANTHES* L. _____

Species *ASPERA* L. _____

Family *AMARANTACEAE* _____

Locality *COLLEGE CAMPUS* _____

Date *1.8.72* _____

Remarks _____

Collected by *A. KUDARESAN* _____



Herbarium

DEPARTMENT OF BOTANY

VIVEKANANDA COLLEGE

TIRUVEDAKAM WEST., MADURAI DISTRICT
SOUTH INDIA.

Tag No. _____

Genus *ACHYRANTHES* _____

Species *ASPERA* _____ (M. T. U. B. 8)

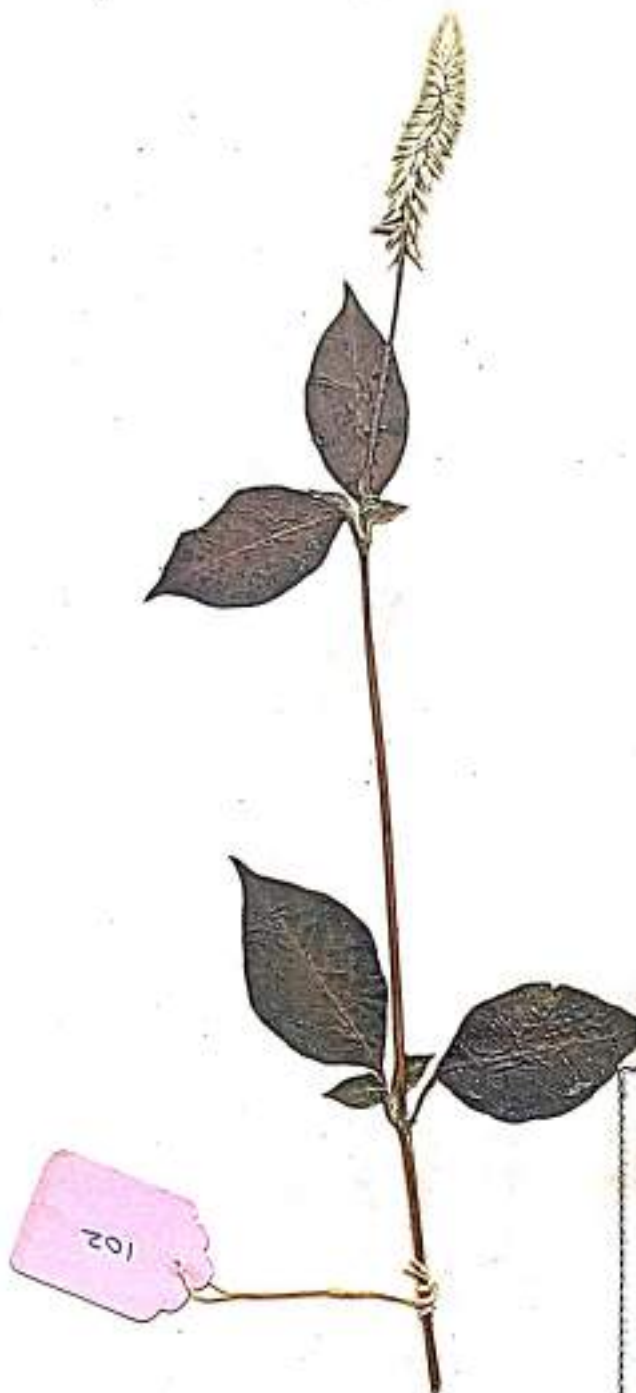
Family *AMARANTACEAE* _____

Locality *COLLEGE CAMPUS* _____

Date *15-9-73* _____

Remarks _____

Collected by *A. KUMARASAN* _____



Herbarium

DEPARTMENT OF BOTANY
VIVEKANANDA COLLEGE
TIRUVEDAKAM WEST., MADURAI DISTRICT
SOUTH INDIA.

Tag No.

Genus ACHYRANTHES

Species BIDENTATA

Family AMARANTACEAE

Locality AZAGAR KOIL

Date 18.2.73

Remarks

Collected by A. KUMARESAN



Herbarium

DEPARTMENT OF BOTANY

VIVEKANANDA COLLEGE
TIRUYEDAKAM, WEST., MADURAI DISTRICT
SOUTH INDIA.

Tag No. _____

Genus Milium

Species Etiocarpa

Family ANNONACEAE

Locality Alagar Koil.

Date 24.9.73

Remarks _____

Collected by A. Kumaresan



Herbarium
DEPARTMENT OF BOTANY
VIVEKANANDA COLLEGE
TIRUVEDAKAM WEST., MADURAI DISTRICT
SOUTH INDIA.

Tag No. _____

Genus Mitrasa
Species E. ricarpa
Family ANNONACEAE
Locality Alagar Koil
Date 24.9.73
Remarks _____

Collected by A. Kumarajen.



Herbarium

DEPARTMENT OF BOTANY
VIVEKANANDA COLLEGE
THRUVEDAKAM WEST-, MADURAI DISTRICT
SOUTH INDIA-

Tag No. _____

Genus *Millettia*

Species *Eriocarpa*

Family **ANNONACEAE**

Locality Alagan Kior.

Date 24.9.73.

Remarks _____

Collected by A. Kumaran.



Mitrocarpa
monilata
Jagannath

Herbarium

DEPARTMENT OF BOTANY
VIVEKANANDA COLLEGE
TIRUVEDAKAM WEST., MADURAI DISTRICT
SOUTH INDIA.

Tag No.

Genus MITROCARPA

Species HEYNEANA

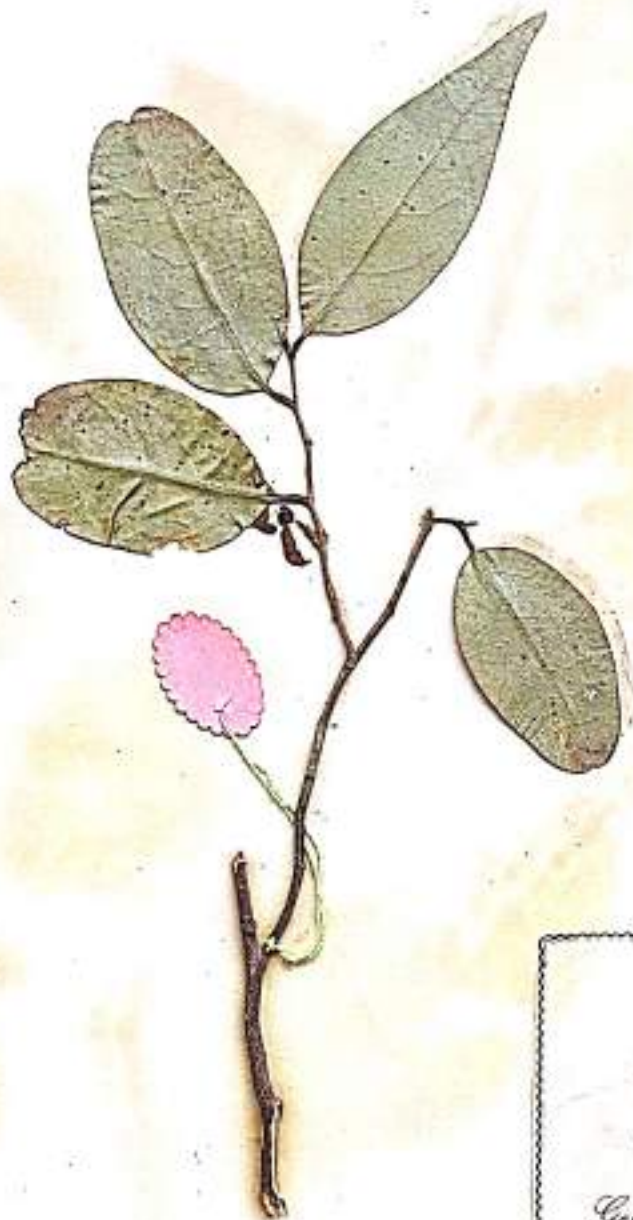
Family ANNONACEAE

Locality Azhagarcoil.

Date 24.9.73

Remarks

Collected by A. Kumaraswami



Herbarium

DEPARTMENT OF BOTANY

VIVEKANANDA COLLEGE

TIRUYEDAKAM WEST., MADURAI DISTRICT
SOUTH INDIA.

Tag No. _____

Genus *MITROPHORA*

Species *HEYNEANA*

Family **ANNONACEAE**

Locality *Azhagarkoil*

Date *24-9-'73*

Remarks *shrub. on small tree*

Collected by *A. Kumanesan*



Herbarium

DEPARTMENT OF BOTANY
VIVEKANANDA COLLEGE
THRUVIDAKAM WEST, MADURAI DISTRICT
SOUTH INDIA.

Tag No. _____

Genus Artibeolys

Species Obovatisimus

Family ANNONACEAE

Locality Thruvidakam

Date _____

Remarks Hot Climber. Shrub.

Collected by A. Kumaraswami



Herbarium

DEPARTMENT OF BOTANY
VIVEKANANDA COLLEGE
TRUVEDAKAM WEST., MADURAI DISTRICT
SOUTH INDIA.

Tag No. _____

Genus *Artabotrys*

Species *Obovatissimus*

Family **ANNONACEAE**

Locality Trivudakam

Date 8.1.72

Remarks Herb climber, Shrub.

Collected by A. Kumaresan.



Herbarium
DEPARTMENT OF BOTANY
VIVEKANANDA COLLEGE
TIRUVEDAKAM WEST., MADURAI DISTRICT
SOUTH INDIA.

Tag No. _____

Genus *Artabotrys* _____
Species *Obovatistimus* _____
Family **ANNONACEAE** _____
Locality *Tiruvadakam* _____
Date *8.1.72* _____
Remarks *Herb Climber, Shrub.* _____

Collected by *A. Kumarason.* _____



Herbarium

DEPARTMENT OF BOTANY

VIVEKANANDA COLLEGE

TIRUVEDAKAM WEST., MADURAI DISTRICT
SOUTH INDIA.

Tag No. _____

Genus *VINCA* _____

Species *VARIEGATA* _____

Family *APCYNACEAE* _____

Locality *COCNOOR* _____

Date *22.10.75* _____

Remarks _____

Collected by *A. KUNDARE SAN* _____

BOTANY MUSEUM

VIVEKANANDA COLLEGE, TIRUVEDAKAM WEST,
MADURAI DT.



Herbarium

DEPARTMENT OF BOTANY

VIVEKANANDA COLLEGE

THIRUVEDAKAM WEST., MADURAI DISTRICT
SOUTH INDIA.

Tag No. _____

Genus *CARISSA*

Species *Carandas*

Family **APOCYNACEAE**

Locality *Alagan koil.*

Date *18. 2. 73.*

Remarks _____

Collected by *A. Jeyaratnam*



Herbarium

DEPARTMENT OF BOTANY
VIVEKANANDA COLLEGE
TIRUVEDAKAM WEST., MADURAI DISTRICT
SOUTH INDIA.

Tag No. _____

Genus *CARISSA*

Species *Caramdas*

Family **APOCYNACEAE**

Locality Alagarcoil

Date 24.8.73

Remarks Perennial shrub, bud
modified into spines.

Collected by A. Kumaresan.



Herbarium

DEPARTMENT OF BOTANY
VIVEKANANDA COLLEGE
TRUVEDAKAM WEST., MADURAI DISTRICT
SOUTH INDIA.

Tag No.

Genus *NERIUM*

Species *Odorum*

Family *APOCYNACEAE*

Locality *Manjampatty*

Date *6.11.73*

Remarks

Collected by *Rajaram*



Herbarium
DEPARTMENT OF BOTANY
VIVEKANANDA COLLEGE
TIRUVEDAKAM WEST., MADURAI DISTRICT
SOUTH INDIA.

Tag No. _____

Genus *ICHNOCARPUS*.

Species *f. rutescens*

Family **APOCYNACEAE**

Locality Alagar Koil

Date 24.9.72.

Remarks _____

Collected by A. Kumaresan



Herbarium

DEPARTMENT OF BOTANY
VIVEKANANDA COLLEGE
TIRUVEDAKAM WEST., MADURAI DISTRICT
SOUTH INDIA.

Tag No. _____

Genus *ICHNOCARPUS*

Species *Frutescens*

Family **APOCYNACEAE**

Locality Alagar Kol.

Date 24.9.73.

Remarks

Collected by A. Kumarasw.



Herbarium

DEPARTMENT OF BOTANY
VIVEKANANDA COLLEGE
TIRUVEDAKAM WEST., MADURAI DISTRICT
SOUTH INDIA.

Tag No.

Genus *ICHINOCARPUS*

Species *Frutescens*

Family *APOCYNACEAE*

Locality *Coatla Nam*

Date *19.9.73*

Remarks *Shrub.*

Collected by *A. J.*



Herbarium

DEPARTMENT OF BOTANY
VIVEKANANDA COLLEGE
TIRUVEDAKAM WEST., MADURAI DISTRICT
SOUTH INDIA.

Tag No. _____

Genus *VALLARIS*

Species *Solanacea*

Family *APCYNACEAE*

Locality *American College Campus*

Date: *12.2.73*

Remarks _____

Collected by *A. Kumaram*



Herbarium

DEPARTMENT OF BOTANY
VIVEKANANDA COLLEGE
IRUVEDAKAM WEST., MADURAI DISTRICT
SOUTH INDIA.

Tag No. _____

Genus *Agave*

Species _____

Family *APOCYNACEAE*

Locality *Alagar koil*

Date *24.1.73.*

Remarks _____

Collected by *Kathavel*



Herbarium

DEPARTMENT OF BOTANY

VIVEKANANDA COLLEGE

TIRUVEDAKAM WEST., MADURAI DISTRICT
SOUTH INDIA.

Tag No.

Genus *VINCA* ROSEA

Species *Nithiakalyani*

Family **APCYNACEAE**

Locality College Campus

Date 15.11.73

Remarks

Collected by A. Kumaraswami.



Herbarium
DEPARTMENT OF BOTANY
VIVEKANANDA COLLEGE
TIRUVEDAKAM WEST, MADURAI DISTRICT
SOUTH INDIA.

Tag No. _____

Genus *THEVETIA* NERIFOLIA _____
Species _____
Family **APOCYNACEAE** _____
Locality College Campus _____
Date 10.10.73. _____
Remarks _____

Collected by A. KUMARASWAMI



Herbarium

DEPARTMENT OF BOTANY
VIVEKANANDA COLLEGE
THIRUVEDAKAM WEST, MADURAI DISTRICT
SOUTH INDIA.

Tag No. _____

Genus *ERVATOMEA*

Species *Cornea*

Family *APOCYNACEAE*

Locality *College Campus*

Date *1.1.73*

Remarks _____

Collected by *A. Srinivasan*



Herbarium

DEPARTMENT OF BOTANY
VIVEKANANDA COLLEGE
THIRUVEDAKAM WEST, MADURAI DISTRICT
SOUTH INDIA.

Tag No. _____

Genus *NERIUM*

Species *ODORUM*

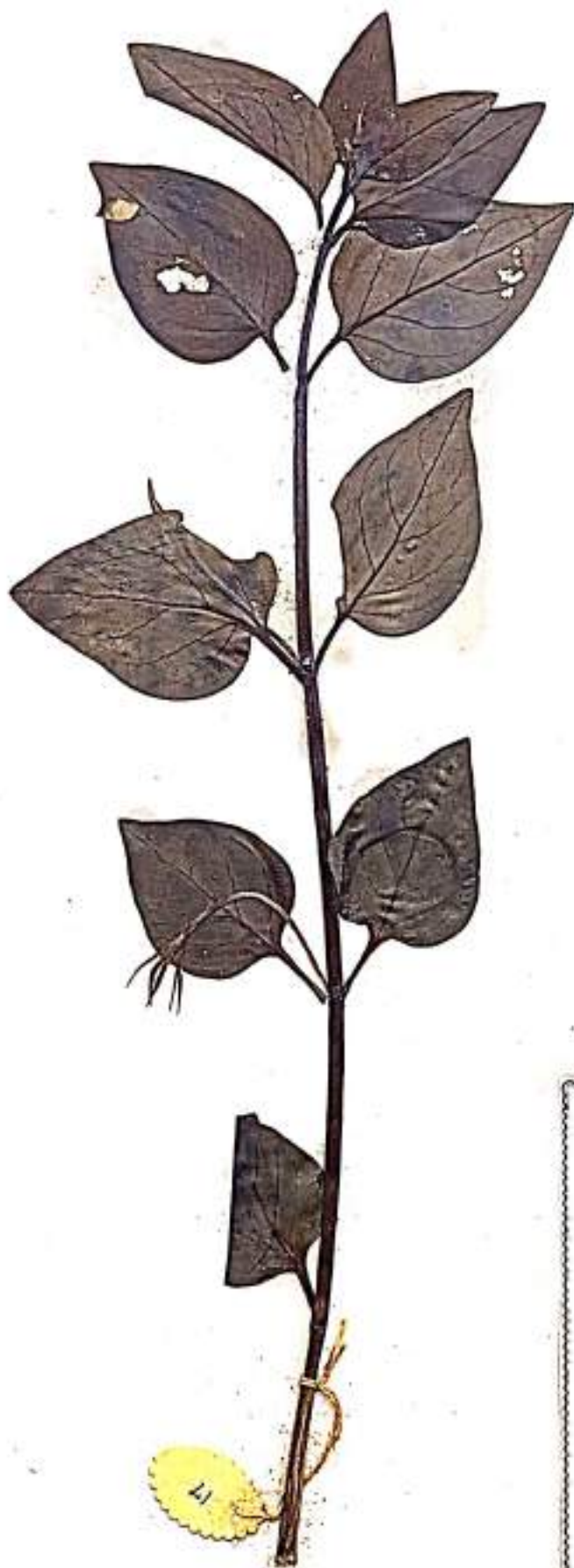
Family *APOCYNACEAE*

Locality *College Campus*

Date *15.11.73*

Remarks _____

Collected by *A. Kumaresan*



Herbarium

DEPARTMENT OF BOTANY
VIVEKANANDA COLLEGE
THRUVEDAKAM WEST-, MADURAI DISTRICT
SOUTH INDIA.

Tag No.

Genus *VINCA*

Species *Major*

Family *APOCYNACEAE*

Locality *Kodaikanal*

Date *26.1.73.*

Remarks

Collected by *Rajasekaram*



Herbarium

DEPARTMENT OF BOTANY
VIVEKANANDA COLLEGE
TIRUYEDAKAM WEST, MADURAI DISTRICT
SOUTH INDIA.

Tag No. _____

Genus *VALLARIS* _____

Species _____

Family *APOCYNACEAE* _____

Locality Madurai _____

Date 25.2.73 _____

Remarks _____

Collected by A. Kumarasam.



Herbarium

DEPARTMENT OF BOTANY
VIVEKANANDA COLLEGE
THIRUVEDAKAM WEST, MADURAI DISTRICT
SOUTH INDIA.

Tag No. _____

Genus *Ervatomea*

Species *correa*

Family *APOCYNACEAE*

Locality Ramakrishna Ashramam

Date 18.2.73

Remarks

Collected by A. Kumaraswami



Herbarium

DEPARTMENT OF BOTANY
VIVEKANANDA COLLEGE
TIRUVEDAKAM WEST., MADURAI DISTRICT
SOUTH INDIA.

Tag No. _____

Genus *ERVATOMEA*

Species *Sp.*

Family *APCYNACEAE*

Locality *Astnamam*

Date *1.1.73*

Remarks _____

Collected by *A. KUMARASWAMI*



Herbarium

DEPARTMENT OF BOTANY
VIVEKANANDA COLLEGE
TIRUVEDAKAM WEST., MADURAI DISTRICT
SOUTH INDIA.

Tag No. _____

Genus *VINCA*

Species *major*

Family **APCYNACEAE**

Locality *Trodakommal*

Date *8.8.73*

Remarks *Small herb. flowers are pink in colour.*

Collected by *A. Jeyamonesan*



Herbarium

DEPARTMENT OF BOTANY
VIVEKANANDA COLLEGE
TIRUVEDAKAM WEST., MADURAI DISTRICT
SOUTH INDIA.

Tag No. _____

Genus *NERIUM*

Species *Odorum*

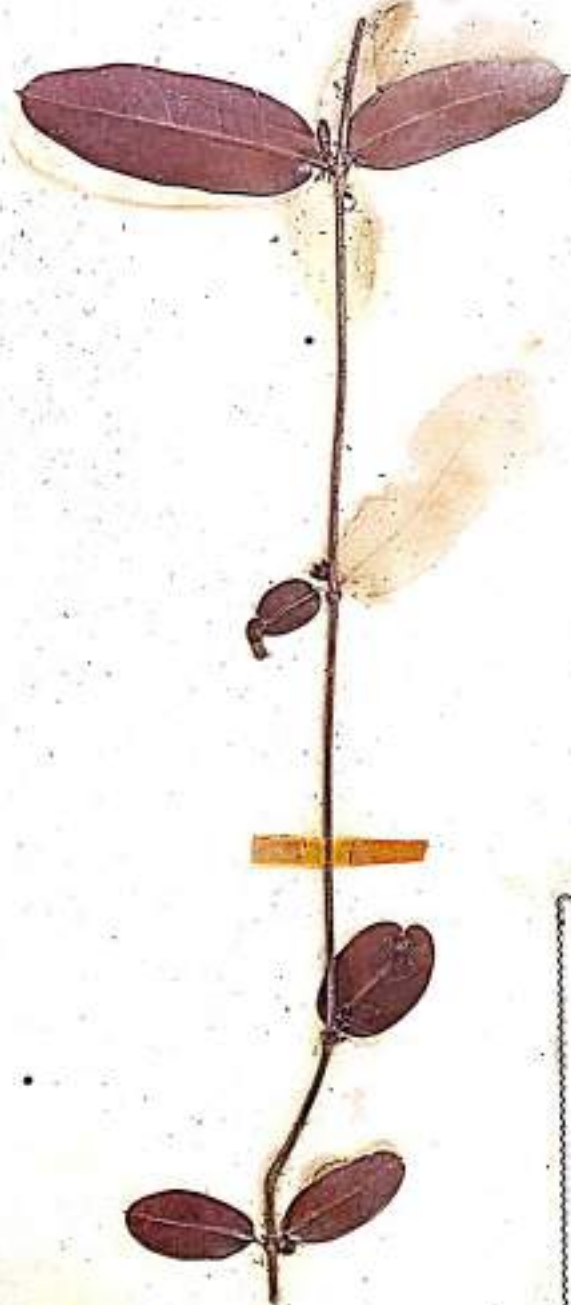
Family *APOCYNACEAE*

Locality *Alagar Kol*

Date *13.3.73*

Remarks *Shrub with whorled leaves.*

Collected by *A. Jeyamurugan*



Herbarium

DEPARTMENT OF BOTANY
VIVEKANANDA COLLEGE
THIRUVEDAKAM WEST, MADURAI DISTRICT
SOUTH INDIA.

Tag No.

Genus *HEMIDESMUS*

Species *INDICUS*

Family *ASCLEPIADACEAE*

Locality *ALAGARKOIL*

Date *18.2.73*

Remarks

Collected by *A. MURUGESAN*



Herbarium

DEPARTMENT OF BOTANY

VIVEKANANDA COLLEGE

TIRUVEDAKAM WEST, MADURAI DISTRICT
SOUTH INDIA.

Tag No. _____

Genus *SECAMON*

Species *EMETICA*

Family *ASCLEPIADACEAE*

Locality *ALAGARKON*

Date *24.8.71*

Remarks _____

Collected by *A. VISVESAN*



Herbarium

DEPARTMENT OF BOTANY
VIVEKANANDA COLLEGE
THIRUVIDAKAM WEST., MADURAI DISTRICT
SOUTH INDIA.

Tag No. _____

Genus Calotropis

Species GIGANTEA

Family ASCLEPIADACEAE

Locality COLLEGE CAMPUS

Date 15.11.73

Remarks _____

Collected by A. YAMMARE-SAM



BOTANY MUSEUM
VIVEKANANDA COLLEGE, TIRUVEDAKAM WEST,
MADURAI DT.

Herbarium
DEPARTMENT OF BOTANY
VIVEKANANDA COLLEGE
TIRUVEDAKAM WEST., MADURAI DISTRICT
SOUTH INDIA.

Tag No. _____

Genus IMPATIENS HOOKERIANA

Species _____

Family BALSAMINEAE

Locality DINDIGETTA

Date 21.10.75

Remarks _____

Collected by A. MUMARESAN



Herbarium

DEPARTMENT OF BOTANY

VIVEKANANDA COLLEGE

TIRUVEDAKAM WEST., MADURAI DISTRICT
SOUTH INDIA.

Tag No. _____

Genus *IMPATIENS* _____

Species *MODESTA* _____

Family *BALSAMINACEAE* _____

Locality *DHODAGETTA* _____

Date *22.11.75* _____

Remarks _____

Collected by *A. HANMAREGAN* _____

BOTANY MUSEUM
VIVEKANANDA COLLEGE, TIRUVEDAKAM WEST.
MADURAI DT.



Herbarium

DEPARTMENT OF BOTANY
VIVEKANANDA COLLEGE
TRUVEDIKAM WEST, MADURAI DISTRICT
SOUTH INDIA

Tag No. _____

Genus *IPOMOEA*.

Species *Sp.*

Family **BALSAMINACEAE**

Locality Kodakaval

Date 20.11.73.

Remarks The flowers are irregular
due to the spur.

Collected by A. Kumaraswami.



Herbarium

DEPARTMENT OF BOTANY
VIVEKANANDA COLLEGE
TIRUVEDAKAM WEST, MADURAI DISTRICT
SOUTH INDIA.

Tag No. _____

Genus *IMPATIENS*

Species *Balsamina*

Family **BALSAMINACEAE**

Locality Ramakrish Ashramam.

Date 5.12.73.

Remarks Herb.

Collected by A. J. Kumaraswami.



Herbarium
DEPARTMENT OF BOTANY
VIVEKANANDA COLLEGE
TIRUVEDAKAM WEST., MADURAI DISTRICT
SOUTH INDIA.

Tag No.

Genus *IMPATIENS*

Species *lexhamii* ^{Day} ~~Maltzi~~

Family **BALSAMINACEAE**

Locality *Day*

Date 19.10.73.

Remarks

Collected by *A. Kumaranadan.*



Herbarium

DEPARTMENT OF BOTANY
VIVEKANANDA COLLEGE
TIRUVEDAKAM WEST., MADURAI DISTRICT
SOUTH INDIA.

Tag No. _____

Genus *IMPATIENS*

Species *leschmannii*

Family **BALSAMINACEAE**

Locality *Dolj*

Date 19.10.73

Remarks _____

Collected by *A. Kumarasam.*



Herbarium

DEPARTMENT OF BOTANY
VIVEKANANDA COLLEGE
TIRUVIDAKAM WEST, MADURAI DISTRICT
SOUTH INDIA.

Tag No. _____

Genus *IPOMOEA*

Species *chinensis*

Family **BALSAMINACEAE**

Locality *Koolaikamal*

Date *10.1.73*

Remarks _____

Collected by *Sabramanian, N.*



Herbarium

DEPARTMENT OF BOTANY
VIVEKANANDA COLLEGE
TIRUVEDAKAM WEST., MADURAI DISTRICT
SOUTH INDIA.

Tag No. _____

Genus *IMPATIENS*

Species *Spensia*

Family **BALSAMINACEAE**

Locality Anamalai Hills

Date 20. 11. 72.

Remarks _____

Collected by Rajasekaran.



Herbarium

DEPARTMENT OF BOTANY
VIVEKANANDA COLLEGE
TIRUVEDAKAM WEST., MADURAI DISTRICT
SOUTH INDIA.

Tag No. _____

Genus MILLINGTONIA

Species HORTENSIS

Family BIGNONIACEAE

Locality COLLEGE CAMPUS

Date 15.11.73

Remarks _____

Collected by A. KUDARESAN



Herbarium
DEPARTMENT OF BOTANY
VIVEKANANDA COLLEGE
THIRUVIDAKAM WEST., MADURAI DISTRICT
SOUTH INDIA.

Tag No. _____

Genus *HELIOTROPUM*

Species *INDICUM*

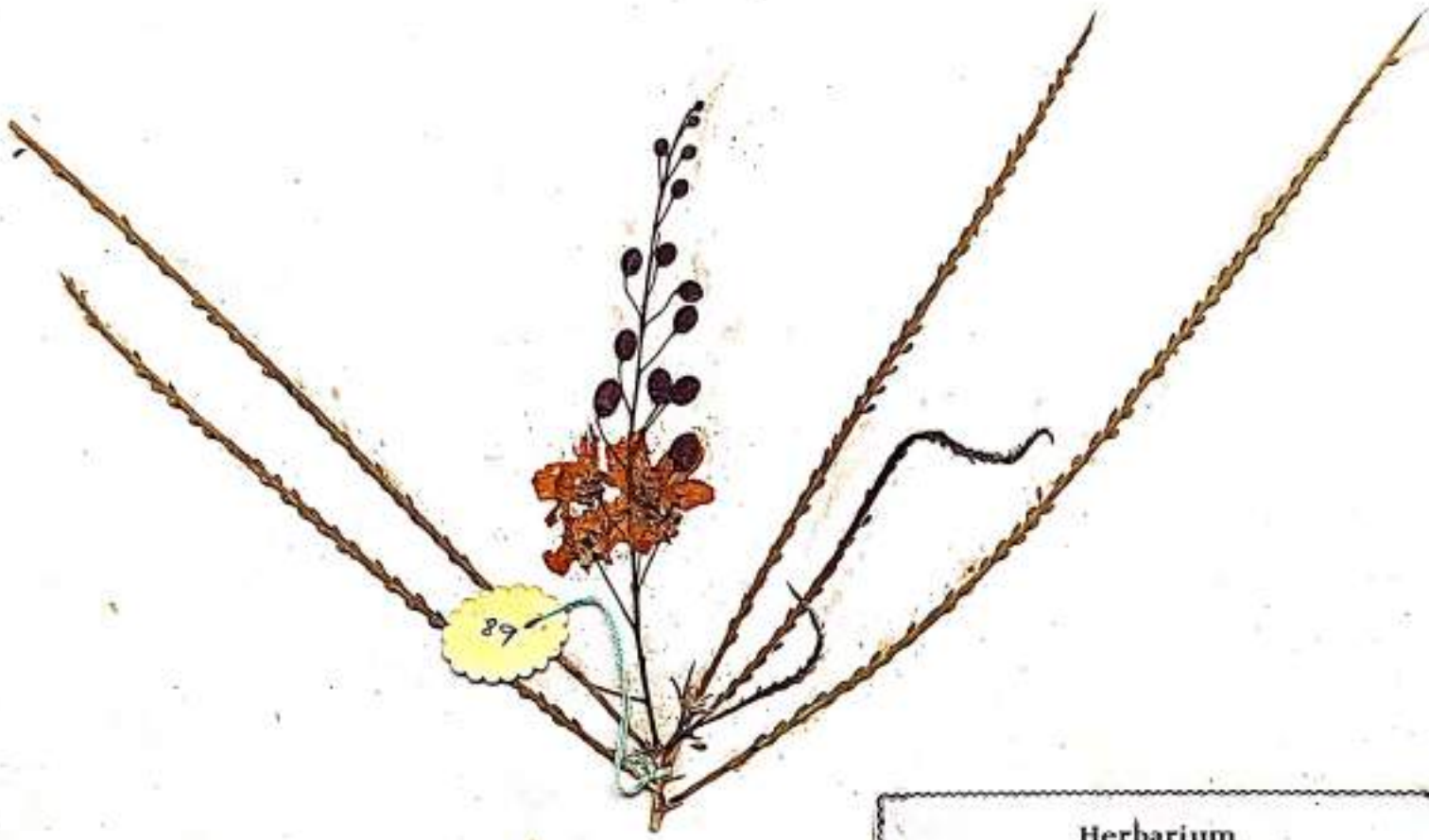
Family *BORAGINACEAE*

Locality *PHILAVANSAN*

Date *15.8.73*

Remarks _____

Collected by *A. VIMARESAN*



Herbarium

DEPARTMENT OF BOTANY
VIVEKANANDA COLLEGE
TIRUVEDAKAM WEST, MADURAI DISTRICT
SOUTH INDIA.

Tag No. _____

Genus PARKINSONIA

Species ACULEATA

Family CAESALPINEA

Locality MADURAI

Date 8.2.72

Remarks Tree, primary rachis modified
into spine.

Collected by A. MURUGESAN



Herbarium

DEPARTMENT OF BOTANY
VIVEKANANDA COLLEGE
TIRUVEDAKAM WEST-, MADURAI DISTRICT
SOUTH INDIA.

Tag No. _____

Genus CASSIA

Species SOPHORA

Family CAESALPINEAE

Locality TIRUVEDAKAM

Date 15.1.74

Remarks HERB.

Collected by A. MUMBESAN.



Herbarium

DEPARTMENT OF BOTANY
VIVEKANANDA COLLEGE
TIRUVEDAKAM WEST, MADURAI DISTRICT
SOUTH INDIA.

Tag No. _____

Genus ANAPHALIS

Species OBLONGA

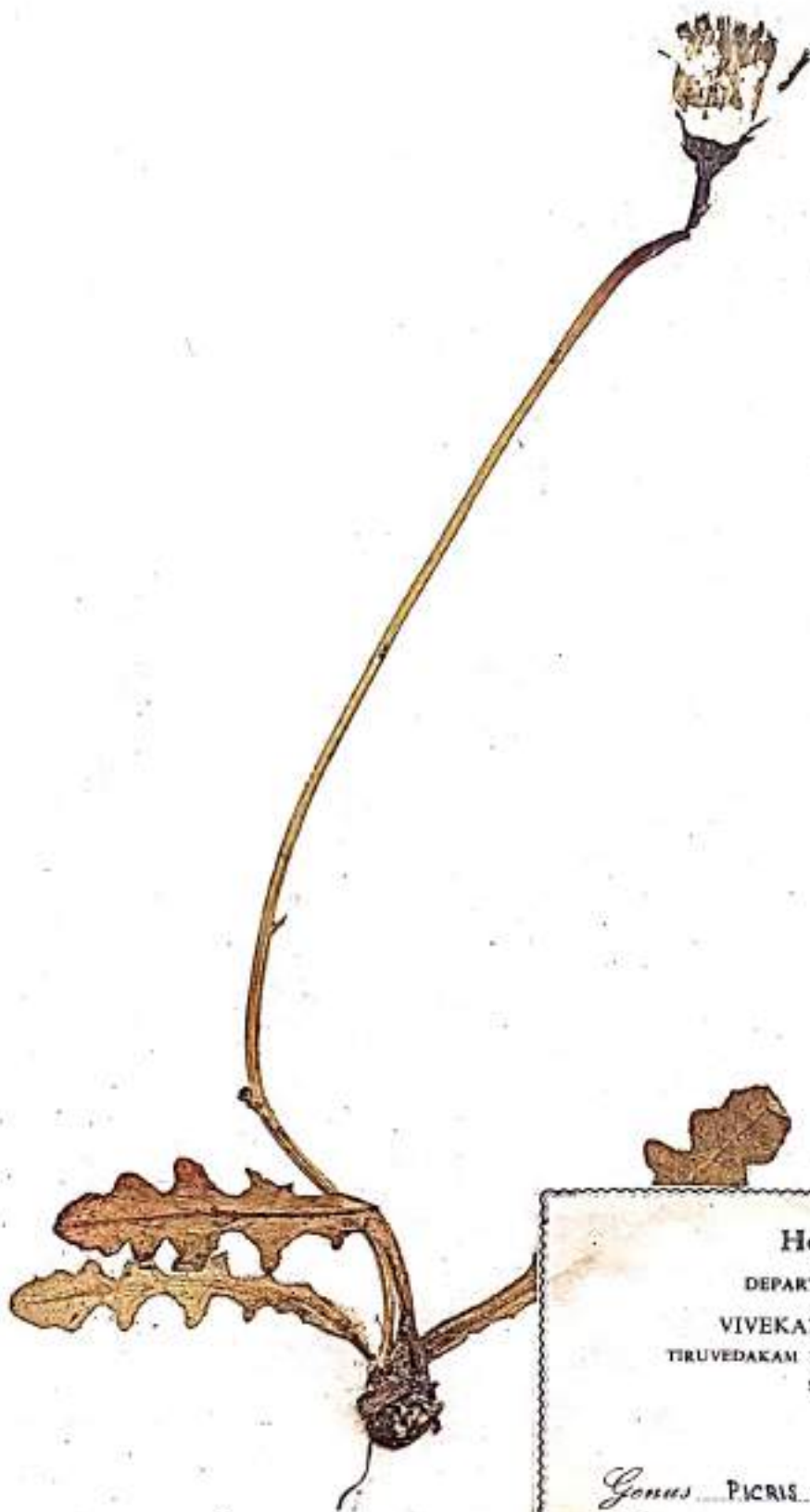
Family COMPOSITAE

Locality DHODABETTA

Date 21.10.75

Remarks _____

Collected by A. KUMAR SAN



Herbarium

DEPARTMENT OF BOTANY

VIVEKANANDA COLLEGE

TIRUVEDAKAM WEST., MADURAI DISTRICT
SOUTH INDIA.

Tag No. _____

Genus PICRIS

Species HERACIODES

Family COMPOSITAE

Locality DHODABETTA

Date 21.10.75

Remarks _____

Collected by A. MURUGESAN

BOTANY MUSEUM
VIVEKANANDA COLLEGE, TIRUVEDAKAM WEST,
MADURAI DT.



Herbarium

DEPARTMENT OF BOTANY
VIVEKANANDA COLLEGE
TIRUVEDAKAM WEST, MADURAI DISTRICT,
SOUTH INDIA.

Tag No. _____

Genus *COSMOS* Sp. _____

Species _____

Family *COMPOSITAE*

Locality *OOTY*

Date *23.10.75*

Remarks _____

Collected by *A. MUMARESAN*

BOTANY MUSEUM
VIVEKANANDA COLLEGE, TIRUVEDAKAM WEST,
MADURAI DT.



Herbarium

DEPARTMENT OF BOTANY
VIVEKANANDA COLLEGE
TIRUVEDAKAM WEST., MADURAI DISTRICT
SOUTH INDIA.

Tag No. _____

Genus *TARAXACUM* _____

Species _____ *KOK. SAGRYS* _____

Family *COMPOSITAE* _____

Locality *2/110.75* _____

Date _____

Remarks _____

Collected by *A. KUMARESAN* _____

BOTANY MUSEUM
VIVEKANANDA COLLEGE, TIRUVEDAKAM WEST.
MADURAI DT.



Herbarium

DEPARTMENT OF BOTANY
VIVEKANANDA COLLEGE
TIRUVEDAKAM WEST, MADURAI DISTRICT
SOUTH INDIA.

Tag No. _____

Genus *BIUMEA* . Sps. _____

Species _____

Family *COMPOSITAE*

Locality *DHODABETTA*

Date *21.10.75*

Remarks _____

Collected by *A. KUMARASAN*

B N V A R E E I
PLEASE HELP IN THE ERADICATION OF THIS
"NOXIOUS WEED"



BOTANY ASSOCIATION
VIVEKANANDA COLLEGE
MADURAI-DIST.

This weed is believed to be responsible for skin ailments such as 'Crocodile skin' etc. . This weed is spreading fast in ~~Madurai~~ vicinity and its eradication is essential from the point view of human welfare.

Please follow the instruction in eradication operation
1. If you are sensitive to the plant, do not approach it.
2. Use plastic bags as protective gloves.
3. Up-root the entire plant and Burn.

Herbarium
DEPARTMENT OF BOTANY
VIVEKANANDA COLLEGE
THIRUVEDAKAM WEST., MADURAI DISTRICT
SOUTH INDIA.

Tag No. _____

Genus PARTHENIUM

Species _____

Family COMPOSITAE

Locality AROUND MADURAI

Date 8.9.16

Remarks _____

Collected by A. MUMBAESAN



Herbarium

DEPARTMENT OF BOTANY

VIVEKANANDA COLLEGE

TIRUYEDAKAM WEST., MADURAI DISTRICT
SOUTH INDIA.

Tag No. _____

Genus *SOLIDAGO*

Species *canadensis*

Family *COMPOSITAE*

Locality *Madurai*

Date *28.9.73*

Remarks _____

Collected by *A. J. Murugesan*



Herbarium

DEPARTMENT OF BOTANY
VIVEKANANDA COLLEGE
TIRUVIDAKAM WEST., MADURAI DISTRICT
SOUTH INDIA.

Tag No. _____

Genus _____

Species _____

Family _____

Locality *Muvudogam* _____

Date *15.10.73.* _____

Remarks _____

Collected by *A. Jumanesan* _____



Herbarium

DEPARTMENT OF BOTANY

VIVEKANANDA COLLEGE

TIRUVEDAKAM WEST, MADURAI DISTRICT
SOUTH INDIA.

Tag No. _____

Genus - *VERNONIA*

Species *Spp.*

Family *COMPOSITAE*

Locality *Rajaji Park, Madurai.*

Date *13.3.73.*

Remarks _____

Collected by *A. Kumaran.*



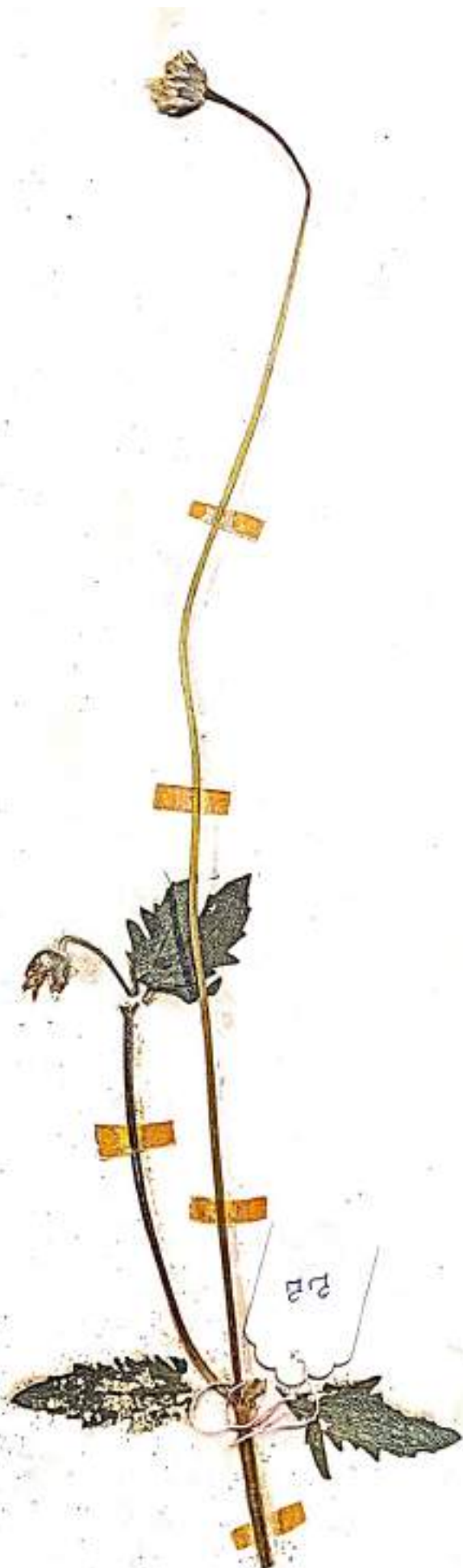
BY
AGE
DISTRICT

No.

Cenpaw

71.

...



Herbarium

DEPARTMENT OF BOTANY
VIVEKANANDA COLLEGE
TIRUVEDAKAM WEST., MADURAI DISTRICT
SOUTH INDIA.

Tag No. _____

Genus *TRIDAX*

Species *Procumbens*

Family *Compositae*

Locality *Coffage Champou*

Date *15.2.73*

Remarks _____

Collected by *A. Kumaraswami*



Herbarium
DEPARTMENT OF BOTANY
VIVEKANANDA COLLEGE
TIRUVEDAKAM WEST., MADURAI DISTRICT
SOUTH INDIA.

Tag No. _____

Genus *ANAPHALIS* _____
Species *wightiana* _____
Family **COMPOSITAE** _____
Locality *Ooty* _____
Date *23.10.69* _____
Remarks *Herb.* _____

Collected by Jayachandran



Herbarium

DEPARTMENT OF BOTANY

VIVEKANANDA COLLEGE

TIRUVEDAKAM WEST., MADURAI DISTRICT
SOUTH INDIA.

Tag No. _____

Genus *ARTEMISIA*

Species *parvifolia*

Family *COMPOSITAE*

Locality *Ooty*

Date *19.10.73.*

Remarks _____

Collected by *N.B. Sundaraj*



Herbarium

DEPARTMENT OF BOTANY
VIVEKANANDA COLLEGE
TIRUVEDAKAM WEST, MADURAI DISTRICT
SOUTH INDIA.

Tag No. _____

Genus *ANAPHALIS* _____

Species *Lewii* _____

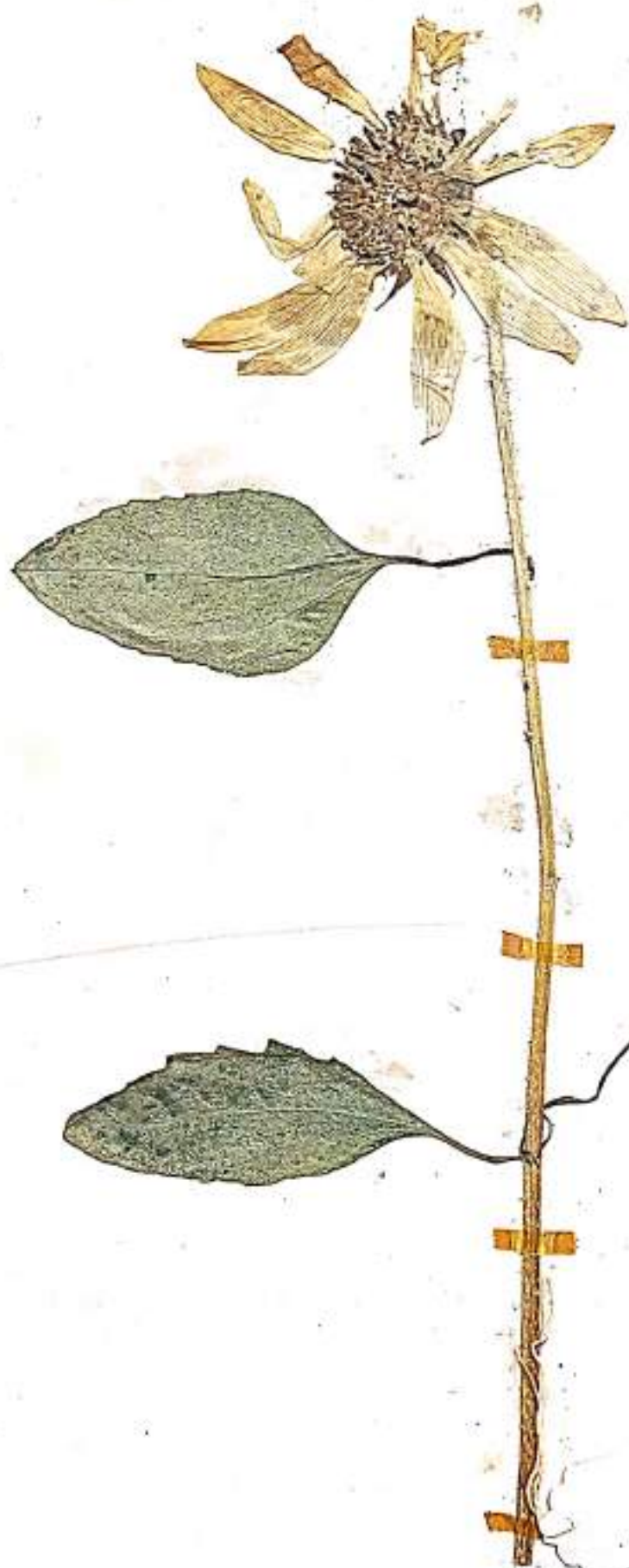
Family *COMPOSITAE* _____

Locality *Kodaikanal* _____

Date *27.11.73* _____

Remarks _____

Collected by *A. Kumaresan* _____



Herbarium
DEPARTMENT OF BOTANY
VIVEKANANDA COLLEGE
TIRUVEDAKAM WEST., MADURAI DISTRICT
SOUTH INDIA.

Tag No.

Genus HELIANTHUS.

Species annuus

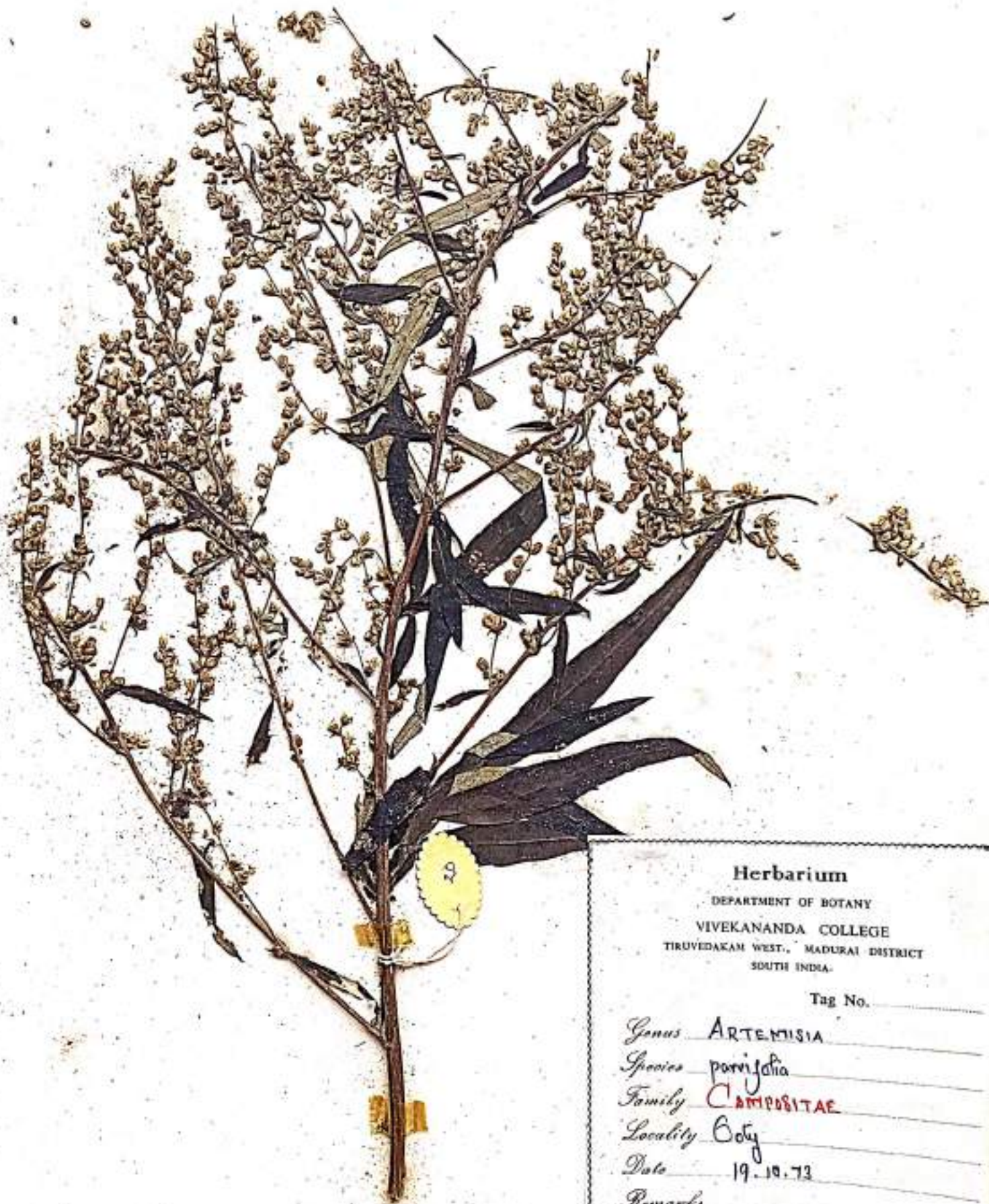
Family COMPOSITAE

Locality Sholavaram.

Date 15.8.73.

Remarks

Collected by A. Viswamathan



Herbarium

DEPARTMENT OF BOTANY
VIVEKANANDA COLLEGE
TIRUVEDAKAM WEST., MADURAI DISTRICT
SOUTH INDIA.

Tag No. _____

Genus ARTEMISIA

Species parvifolia

Family COMPOSITAE

Locality Boty

Date 19.10.73

Remarks _____

Collected by N. B. Sandarraj



Herbarium

DEPARTMENT OF BOTANY

VIVEKANANDA COLLEGE

TIRUVEDAKAM WEST., MADURAI DISTRICT
SOUTH INDIA.

Tag No. _____

Genus *CHRYSANTHEMUM*

Species *Sp.*

Family *COMPOSITAE*

Locality *Judaikamel*

Date *7.10.73*

Remarks _____

Collected by *A. Kuruvajadam*



Herbarium

DEPARTMENT OF BOTANY
VIVEKANANDA COLLEGE
THRUVIDAKAM WEST, MADURAI DISTRICT
SOUTH INDIA.

Tag No.

Genus *SALICAGO*

Species *Sp.*

Family *COMPOSITAE*

Locality *College Campus*

Date *15.11.73.*

Remarks

*Morphological characters like
Cactus.*

Collected by *A. Thummaran.*



Herbarium

DEPARTMENT OF BOTANY
VIVEKANANDA COLLEGE
TIRUVEDAKAH WEST, MADURAI DISTRICT
SOUTH INDIA.

Tag No. _____

Genus ARTEMISIA

Species vulgaris

Family COMPOSITAE

Locality Ooty

Date 21.10.73.

Remarks Shrub.

Collected by N.R. Shanmugam



Herbarium

DEPARTMENT OF BOTANY
VIVEKANANDA COLLEGE
TIRUYEDAKAM WEST, MADURAI DISTRICT
SOUTH INDIA.

Tag No. _____

Genus *ANAPHALIS*

Species *Lawii*

Family *COMPOSITAE*

Locality American College Campus

Date 12-11-73

Remarks _____

Collected by *A. Kumaran*



Herbarium

DEPARTMENT OF BOTANY
VIVEKANANDA COLLEGE
TRUVEDAKAM WEST, MADURAI DISTRICT
SOUTH INDIA.

Tag No.

Genus ARTEMISIA

Species parvifolia

Family COMPOSITAE

Locality Golij

Date 19.10.73.

Remarks

Collected by A. J. K. Srinivasan



Herbarium

DEPARTMENT OF BOTANY
VIVEKANANDA COLLEGE
TIRUVEDAKAM WEST, MADURAI DISTRICT
SOUTH INDIA.

Tag No. _____

Genus *ANAPHALIS* _____

Species *Lewii* _____

Family *COMPOSITAE* _____

Locality *Kudaiyakkal* _____

Date *8.8.73* _____

Remarks _____

Collected by *A. Jeyamurugesan*



Herbarium

DEPARTMENT OF BOTANY
VIVEKANANDA COLLEGE
TIRUVEDAKAM WEST., MADURAI DISTRICT
SOUTH INDIA.

Tag No. _____

Genus *ANAPHALIS*

Species *laxii*

Family *COMPOSITAE*

Locality *Ooty*

Date *12.11.73.*

Remarks _____

Collected by *Murugesan*



Herbarium

DEPARTMENT OF BOTANY
VIVEKANANDA COLLEGE
TIRUVEDAKAM WEST., MADURAI DISTRICT
SOUTH INDIA.

Tag No. _____

Genus ACHELIA

Species _____

Family COMPOSITAE

Locality Kudairimal

Date 8.8.71.

Remarks Small herb. Leaves are
much dissected.

Collected by K. Palanichamy



Herbarium

DEPARTMENT OF BOTANY
VIVEKANANDA COLLEGE
TIRUVEDAKAM WEST., MADURAI DISTRICT
SOUTH INDIA.

Tag No. _____

Genus *ANAPHALIS* _____

Species *lawii* _____

Family *COMPOSITAE* _____

Locality *Mangolai* _____

Date *7.12.43.* _____

Remarks *Herb* _____

Collected by *Jayachandran* _____



Herbarium

DEPARTMENT OF BOTANY

VIVEKANANDA COLLEGE
TIRUVEDAKAM WEST, MADURAI DISTRICT
SOUTH INDIA.

Tag No. _____

Genus *HELICHRYSUM*

Species *Whitei*

Family *Compositae*

Locality *Ooty*

Date *28.10.69*

Remarks *Herb.*

Collected by *M. Jayathiraga*



98

Herbarium

DEPARTMENT OF BOTANY
VIVEKANANDA COLLEGE
TIRUVEDAKAM WEST., MADURAI DISTRICT
SOUTH INDIA.

Tag No.

Genus *HELICHRYSUM*

Species *Sp.*

Family *COMPOSITAE*

Locality *Kodaikamal*

Date *27.11.71*

Remarks *Commonly known as
"everlasting Compositae"*

Collected by *N.B. Sundaresan*



Herbarium
DEPARTMENT OF BOTANY
VIVEKANANDA COLLEGE
TRAVANCORE WEST, MALABAR DISTRICT
SOUTH INDIA.

Tag No. _____

Genus *Ageratum*

Species *Corymboides*

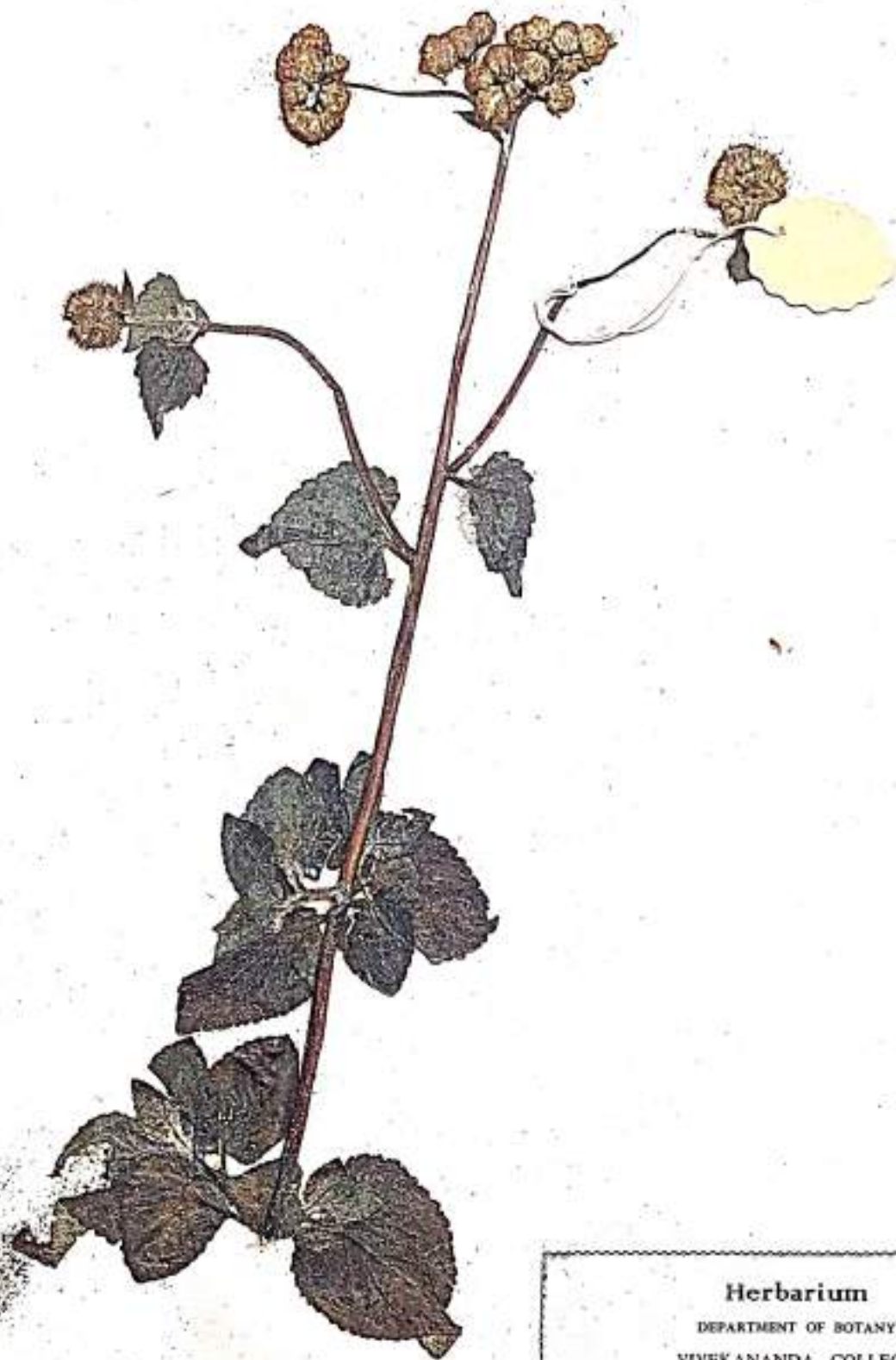
Family *COMPOSITAE*

Locality *Historical*

Date *27.10.47*

Remarks *wild herb.*

Collected by *Suryachandran.*



Herbarium

DEPARTMENT OF BOTANY
VIVEKANANDA COLLEGE
TIRUVIDAKAM WEST., MADURAI DISTRICT
SOUTH INDIA.

Tag No. _____

Genus *AGERATUM* _____

Species *Conyzoides* _____

Family *COMPOSITAE* _____

Locality *Kudaikanal* _____

Date *27.10.67* _____

Remarks *Wild Herb.* _____

Collected by *Jayachandran* _____

7
.....
.....
.....
.....
.....
.....



Herbarium

DEPARTMENT OF BOTANY
VIVEKANANDA COLLEGE
TIRUVEDAKAM WEST., MADURAI DISTRICT
SOUTH INDIA.

Tag No. _____

Genus ARTEMISIA

Species parvifolia

Family Compositae

Locality Doty

Date 26.10.73.

Remarks _____

Collected by M. B. Sundarraj



Herbarium

DEPARTMENT OF BOTANY
VIVEKANANDA COLLEGE
THIRUVEDAKAM WEST., MADURAI DISTRICT
SOUTH INDIA.

Tag No. _____

Genus *ANAPHALIS*

Species _____

Family *COMPOSITAE*

Locality *Jodaikamal*

Date *27.11.73.*

Remarks _____

Collected by *A. Jeyarajam.*



Herbarium

DEPARTMENT OF BOTANY
VIVEKANANDA COLLEGE
TIRUVEDAKAM WEST, MADURAI DISTRICT
SOUTH INDIA.

Tag No. _____

Genus PORANA _____

Species VOLUBILIS _____

Family CONVOLVULACEAE _____

Locality MADURAI _____

Date 6-10-72 _____

Remarks _____

Collected by A. KUMARASAN _____



Herbarium

DEPARTMENT OF BOTANY
VIVEKANANDA COLLEGE
TIRUVEDAKAM WEST, MADURAI DISTRICT
SOUTH INDIA.

Tag No. _____

Genus IPOMOEA _____

Species CORNEA _____

Family CONVULVULACEAE _____

Locality CAMPUS _____

Date 16.4.72 _____

Remarks _____

Collected by A.K. UMARESAN.



Herbarium

DEPARTMENT OF BOTANY
VIVEKANANDA COLLEGE
TIRUVEDAKAM WEST., MADURAI DISTRICT
SOUTH INDIA.

Tag No. _____

Genus JACMANTIA

Species CARULEA

Family CONVOLVULACEAE

Locality TAMBARAM

Date 5-8-67

Remarks CLIMBER

NAME.....
FAMILY.....
LOCALITY.....
DATE OF COLLECTED.....
REMARKS.....

Collected by A. KUMARESAN



Herbarium

DEPARTMENT OF BOTANY

VIVEKANANDA COLLEGE

TIRUVEDAKAM WEST., MADURAI DISTRICT
SOUTH INDIA.

Tag No.

Genus QUAMOCLIT

Species PINNATA

Family CONVOLVULACEAE

Locality COLLEGE GARDEN.

Date 7-11-72.

Remarks

Collected by A. KUMARASAN.



Herbarium

DEPARTMENT OF BOTANY
VIVEKANANDA COLLEGE
TIRUVEDAKAM WEST, MADURAI DISTRICT
SOUTH INDIA.

Tag No. _____

Genus ARGYREA _____

Species HIRSUTA _____

Family CONVULVULACEAE _____

Locality ALAGARKOIL _____

Date 5.1.70 _____

Remarks CLIMBER _____

Collected by A. KUMARASAN _____



Herbarium

DEPARTMENT OF BOTANY
VIVEKANANDA COLLEGE
TIRUVEDAKAM WEST., MADURAI DISTRICT
SOUTH INDIA.

Tag No. _____

Genus *Raphanus* _____

Species *Sativus* _____

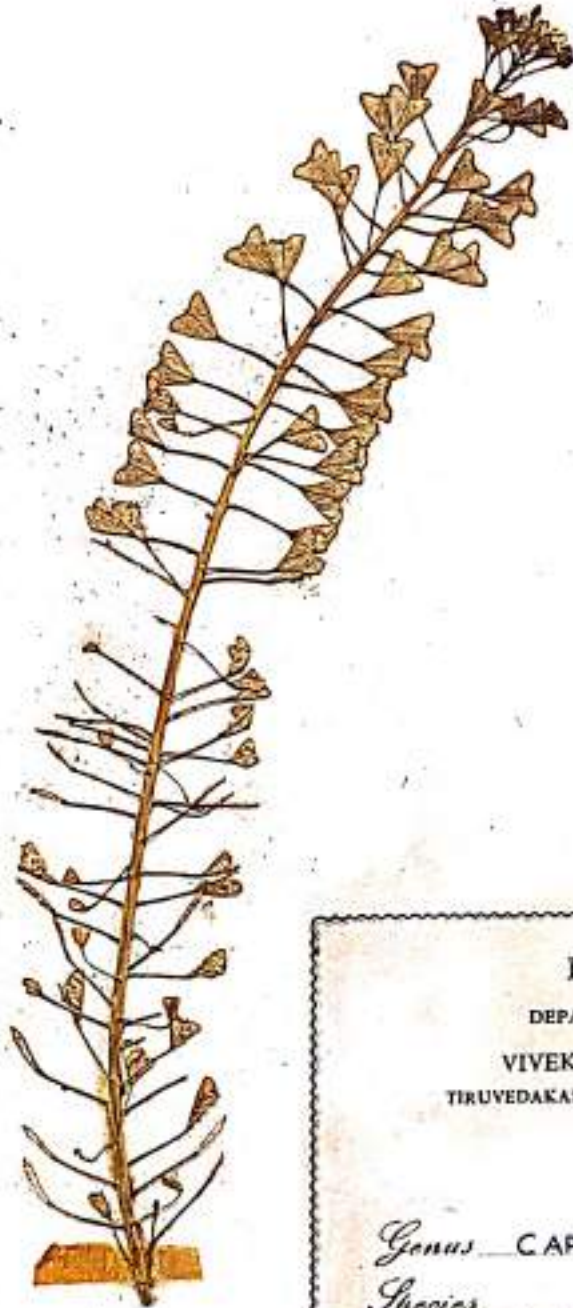
Family **CRUCIFERAE** _____

Locality *Melattal,* _____

Date *10.1.74* _____

Remarks _____

Collected by *A. Sumanasani,* _____



cx

BOTANY MUSEUM
VIVEKANANDA COLLEGE, TIRUVEDAKAM WEST,
MADURAI DT.

Herbarium
DEPARTMENT OF BOTANY
VIVEKANANDA COLLEGE
TIRUVEDAKAM WEST., MADURAI DISTRICT
SOUTH INDIA.

Tag No.

Genus CAPSELLA

Species BURSA - PASTORIS

Family CRUCIFERAE

Locality COONOR

Date 28.10.15

Remarks

.....

.....

Collected by A.KUMARASAN



Herbarium

DEPARTMENT OF BOTANY
VIVEKANANDA COLLEGE
THIRUVEDAKAM WEST, MADURAI DISTRICT
SOUTH INDIA.

Tag No. _____

Genus Mathiola

Species _____

Family CRUCIFERAE

Locality Kodaikkamal

Date 7.9.73

Remarks _____

Collected by A. Jeyaraman